

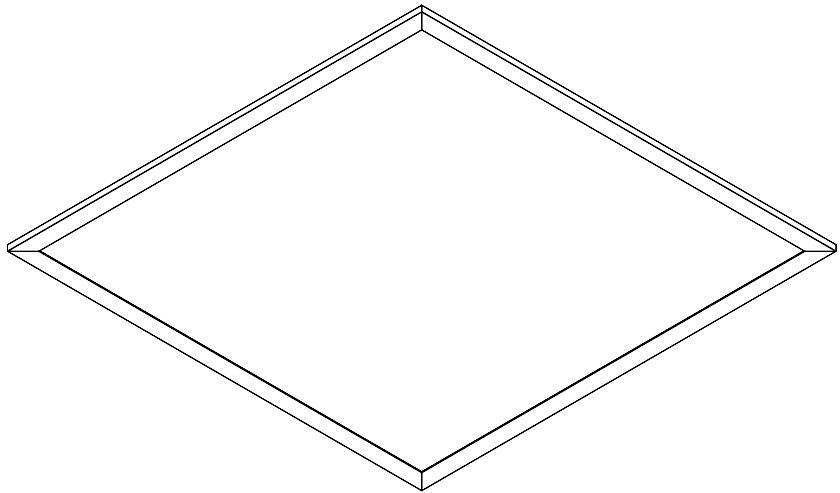
# Apo31

ON/OFF Multilumen

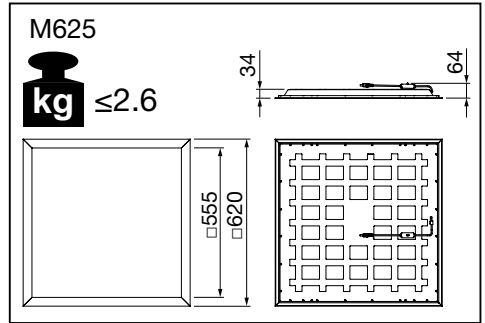
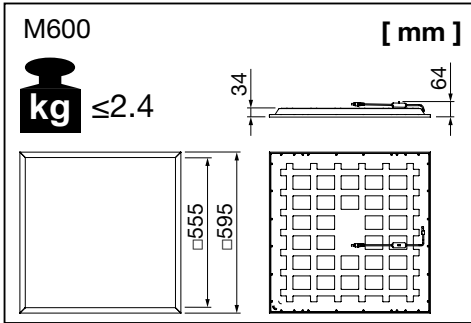
DALI 2 Multilumen

51MP11 . . 2 . 43

51MP12 . . 2 . 43



**siteco**



	<b>B16 [A]</b>	<b>C16 [A]</b>
58MQE11D0E1	32	41
58MQE11M0W2	17	25
58MQE12C1C1	73	73
58MQE12D1C1	73	73
58MQE12M0W2	16	23

**ON / OFF**  
220...240V

58MQE12M0W2  
58MQE11M0W2

ON  
1 2 3

**DALI 2**  
220...240V

58MQE11D0E1

58MQE12D1C1  
58MQE12C1C1

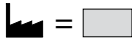
ON  
1 2 3

**DALI Multilumen**

58MQE11D0E1				
DIP				Current [mA]
1	2	3	4	
-	-	-	ON	350
ON	-	ON	ON	600
ON	ON	ON	ON	700

4000K		
51MP11WD2443: DALI 625x625 51MP12WD2443: DALI 600x600		
[lm]	Power [W]	UGR
2042	13.9	≤16
3455	23.6	≤19
4000	27.6	≤19

3000K			4000K			5000K		
51MP11WD2K43: DALI Multi -lumen/-colour 625x625								
Flux [lm]	Power [W]	UGR	Flux [lm]	Power [W]	UGR	Flux [lm]	Power [W]	UGR
1792	13.6	≤16	1961	13.9	≤16	1886	13.6	≤16
3058	23.0	≤19	3317	23.6	≤19	3219	23.0	≤19
3557	26.9	≤19	3840	27.6	≤19	3744	26.9	≤19



more possible  
ML-settings  
Scan QR- Code

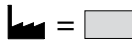
3000K			4000K			5000K		
51MP12WD2K43: DALI Multi -lumen/-colour Tpa 600x600								
Flux [lm]	Power [W]	UGR	Flux [lm]	Power [W]	UGR	Flux [lm]	Power [W]	UGR
1756	13.6	≤16	1921	13.9	≤16	1849	13.6	≤16
2997	23.0	≤19	3250	23.6	≤19	3154	23.0	≤19
3486	26.9	≤19	3763	27.6	≤19	3670	26.9	≤19

**on/off Multilumen**

58MQE11M0W2				
DIP				Current [mA]
1	2	3		
-	-	-		350
ON	-	ON		600
ON	ON	ON		700

4000K		
51MP11WM2443: on/off Multilumen 625x625 51MP12WM2443: on/off Multilumen 600x600		
[lm]	Power [W]	UGR
2029	12.6	≤16
3422	22.1	≤19
4000	25.9	≤19

3000K			4000K			5000K		
51MP11WM2K43: on/off Multi -lumen/-colour 625x625								
Flux [lm]	Power [W]	UGR	Flux [lm]	Power [W]	UGR	Flux [lm]	Power [W]	UGR
1795	12.3	≤16	1948	12.6	≤16	1889	12.3	≤16
3053	21.5	≤19	3285	22.1	≤19	3214	21.5	≤19
3547	25.3	≤19	3840	25.9	≤19	3733	25.3	≤19



more possible  
ML-settings  
Scan QR- Code

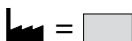
3000K			4000K			5000K		
51MP12WM2K43: on/off Multi -lumen/-colour Tpa 600x600								
Flux [lm]	Power [W]	UGR	Flux [lm]	Power [W]	UGR	Flux [lm]	Power [W]	UGR
1759	12.3	≤16	1909	12.6	≤16	1852	12.3	≤16
2992	21.5	≤19	3220	22.1	≤19	3150	21.5	≤19
3476	25.3	≤19	3763	25.9	≤19	3659	25.3	≤19

**DALI CLO**

58MQE12C1C1				
Curren				Current [mA]
1	2	3		
-	-	-		700
ON	-	-		900
ON	ON	ON		1050

4000K			
51MP11HC2443: DALI CLO 625x625 51MP12HC2443: DALI CLO 600x600			
Flux [lm]	Initial Power [W]	Power [W]	UGR
3307	22.4	27.1	≤19
4184	28.9	35.3	≤19
4698	33.8	41.8	≤19

830				840				850			
51MP11HC2K43: DALI Multi -lumen/-colour CLO 625x625											
Flux [lm]	Initial Power [W]	Power [W]	UGR	Flux [lm]	Initial Power [W]	Power [W]	UGR	Flux [lm]	Initial Power [W]	Power [W]	UGR
2920	21.7	26.4	≤19	3087	22.4	27.1	≤19	3074	21.7	26.4	≤19
3706	28.0	34.3	≤19	3931	28.9	35.3	≤19	3901	28.0	34.3	≤19
4178	32.8	40.5	≤19	4535	33.8	41.8	≤19	4398	32.8	40.5	≤19



more possible  
ML-settings  
Scan QR- Code

830				840				850			
51MP12HC2K43: DALI Multi -lumen/-colour CLO Tpa 600x600											
Flux [lm]	Initial Power [W]	Power [W]	UGR	Flux [lm]	Initial Power [W]	Power [W]	UGR	Flux [lm]	Initial Power [W]	Power [W]	UGR
2862	21.7	26.4	≤19	3009	22.4	27.1	≤19	3013	21.7	26.4	≤19
3632	28.0	34.3	≤19	3832	28.9	35.3	≤19	3823	28.0	34.3	≤19
4184	32.8	40.5	≤19	4420	33.8	41.8	≤19	4404	32.8	40.5	≤19

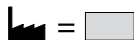
DALI High Lumen				4000K			3000K			4000K			5000K		
<b>58MQE12D1C1</b>				51MP11HD2443: DALI Multilumen 625x625 51MP12HD2443: DALI Multilumen 600x600			51MP11HD2K43: DALI Multi -lumen/-colour High 625x625								
DIP			Current [mA]	Flux [lm]	Power [W]	UGR	Flux [lm]	Power [W]	UGR	Flux [lm]	Power [W]	UGR	Flux [lm]	Power [W]	UGR
1	2	3													
-	-	-	700	4000	27.1	≤19	3547	26.4	≤19	3840	27.1	≤19	3733	26.4	≤19
ON	-	-	900	5109	35.3	≤19	4533	34.3	≤19	4905	35.3	≤19	4771	34.3	≤19
ON	ON	ON	1050	5800	41.8	≤19	5271	40.5	≤19	5568	41.8	≤19	5548	40.5	≤19

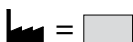
on/off Multilumen				4000K			3000K			4000K			5000K		
<b>58MQE12MOW2</b>				51MP11HM2443: on/off Multilumen High 625x625 51MP12HM2443: on/off Multilumen High 600x600			51MP11HM2K43: on/off Multi -lumen/-colour High 625x625								
DIP			Current [mA]	Flux [lm]	Power [W]	UGR	Flux [lm]	Power [W]	UGR	Flux [lm]	Power [W]	UGR	Flux [lm]	Power [W]	UGR
1	2	3													
-	-	-	700	4000	25.9	≤19	3547	25.3	≤19	3840	25.9	≤19	3733	25.3	≤19
-	-	ON	900	5109	34.0	≤19	4533	33.0	≤19	4905	34.0	≤19	4771	33.0	≤19
ON	ON	ON	1050	5800	40.2	≤19	5271	39.0	≤19	5568	40.2	≤19	5548	39.0	≤19

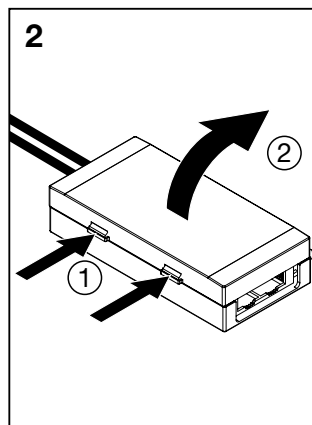
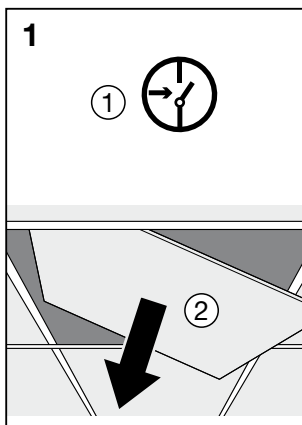
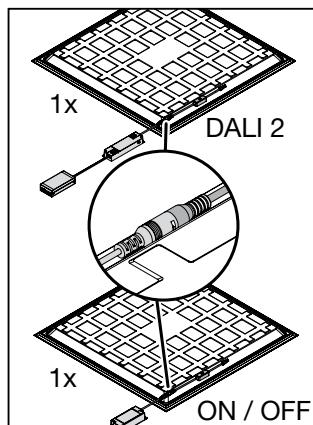
on/off Multilumen				4000K			3000K			4000K			5000K		
<b>58MQE12MOW2</b>				51MP11HM2443: on/off Multilumen High 625x625 51MP12HM2443: on/off Multilumen High 600x600			51MP11HM2K43: on/off Multi -lumen/-colour High 625x625								
DIP			Current [mA]	Flux [lm]	Power [W]	UGR	Flux [lm]	Power [W]	UGR	Flux [lm]	Power [W]	UGR	Flux [lm]	Power [W]	UGR
1	2	3													
-	-	-	700	4000	25.9	≤19	3547	25.3	≤19	3840	25.9	≤19	3733	25.3	≤19
-	-	ON	900	5109	34.0	≤19	4533	33.0	≤19	4905	34.0	≤19	4771	33.0	≤19
ON	ON	ON	1050	5800	40.2	≤19	5271	39.0	≤19	5568	40.2	≤19	5548	39.0	≤19

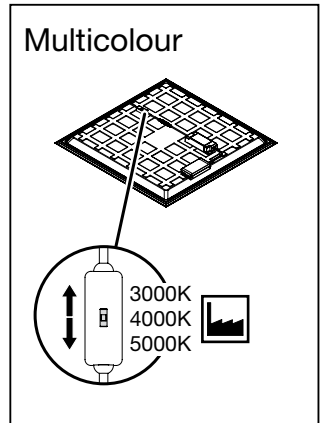
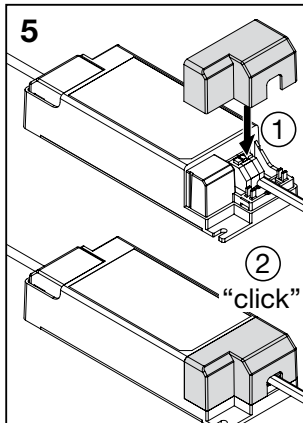
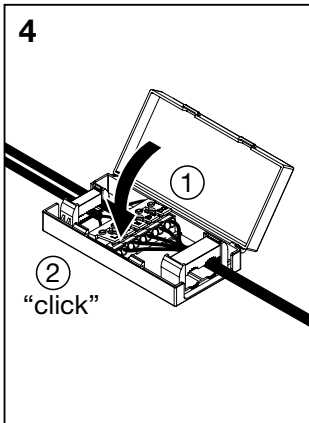
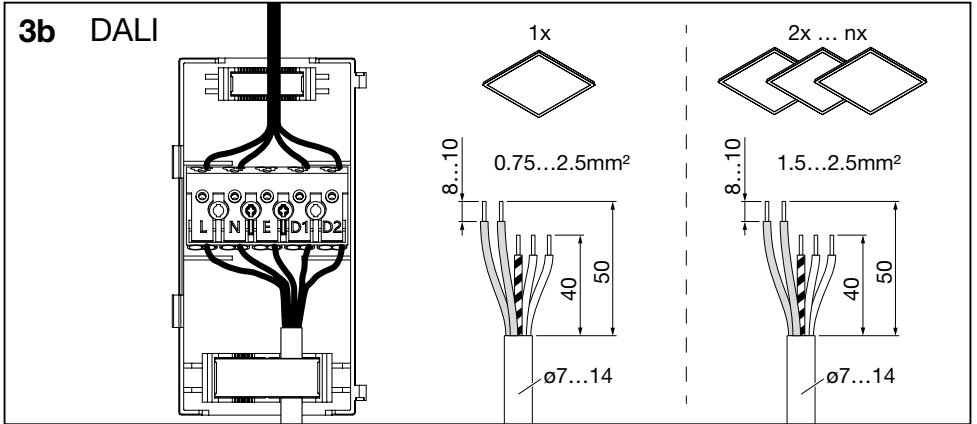
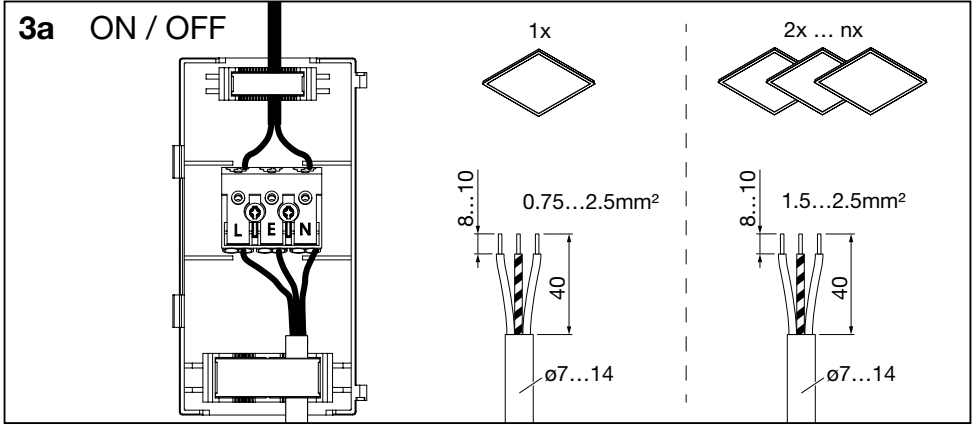


more possible ML-settings  
Scan QR- Code



more possible ML-settings  
Scan QR- Code





### Battery pack

2x 

X	1	AE	180
---	---	----	-----

58DB00B013A ⓘ

---

No battery pack: 2x 

X	1	AE	180
---	---	----	-----

 →

### Central supply

2x 

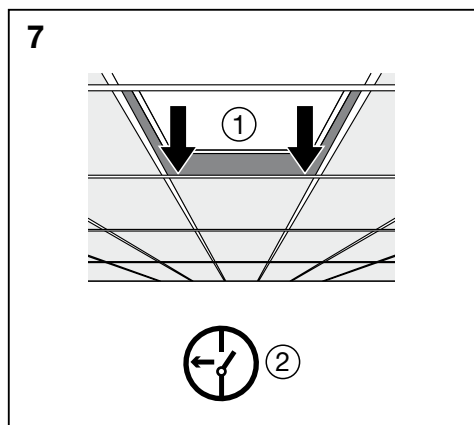
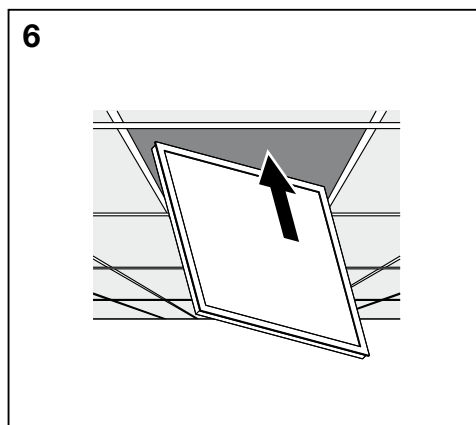
Z	1	*****	
---	---	-------	--

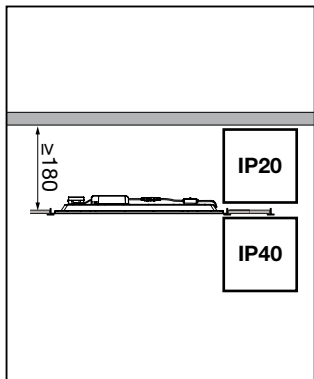
No central supply

2x 

Z	1	*****	
---	---	-------	--

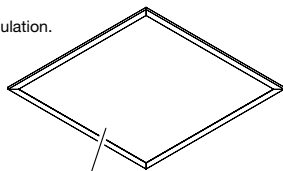
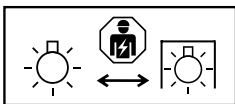
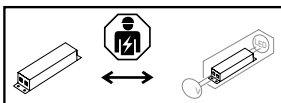
 →





Die Lichtquelle sowie das Betriebsgerät entsprechen den Anforderungen der Ökodesign-Verordnung (EU) 2019/2020, diese sind gemäß dieser Verordnung austauschbar.

The light source and control gear comply with the requirements of the Ecodesign Regulation (EU) 2019/2020 and are interchangeable in accordance with this regulation.



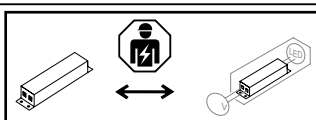
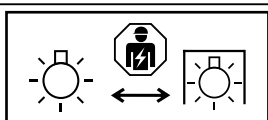
Panel	+	Driver	=	Customer Order Code
58MP11W02443  <a href="#">Link for QR - Code</a>	+	58MQE11D0E1 58MQE11M0W2 58MQE12C1C1 58MQE12D1C1 58MQE12M0W2	=	51MP11WD2443 51MP11WM2443 51MP11HC2443 51MP11HD2443 51MP11HM2443
58MP11W02K43  <a href="#">Link for QR - Code</a>	+	58MQE11D0E1 58MQE11M0W2 58MQE12C1C1 58MQE12D1C1 58MQE12M0W2	=	51MP11WD2K43 51MP11WM2K43 51MP11HC2K43 51MP11HD2K43 51MP11HM2K43
58MP12W02443  <a href="#">Link for QR - Code</a>	+	58MQE11D0E1 58MQE11M0W2 58MQE12C1C1 58MQE12D1C1 58MQE12M0W2	=	51MP12WD2443 51MP12WM2443 51MP12HC2443 51MP12HD2443 51MP12HM2443
58MP12W02K43  <a href="#">Link for QR - Code</a>	+	58MQE11D0E1 58MQE11M0W2 58MQE12C1C1 58MQE12D1C1 58MQE12M0W2	=	51MP12WD2K43 51MP12WM2K43 51MP12HC2K43 51MP12HD2K43 51MP12HM2K43

**B**

- Ⓢ Dieses Produkt enthält eine Lichtquelle der Energieeffizienzklasse B.
- Ⓢ This product contains a light source of energy efficiency class B.



Ⓢ Nicht zur Abdeckung mit Wärmedämm-Material geeignete Leuchten Ⓢ Luminaires not suitable for covering with thermally insulating material Ⓢ Ce luminaire ne convient pas aux revêtements constitués de matériaux thermo-isolants Ⓢ Apparecchi di illuminazione non idonei per essere ricoperti con materiale termoisolante Ⓢ Las luminarias no son aptas para el recubrir con material aislante térmicamente Ⓢ Luminárias não adequadas para cobertura com material de isolamento térmico Ⓢ Οι λυχνίες δεν πρέπει να καλύπτονται με θερμομονωτικό υλικό Ⓢ Armaturen niet geschikt voor het bedekken met warmte-isolerend materiaal Ⓢ Armaturen skall inte täckas med termiskt isolerande material Ⓢ Valaisimia ei saa peittää lämpöeristävällä materiaailla Ⓢ Lampene er ikke egnet for tildekking av termisk isoleringsmateriale Ⓢ Armaturerne er ikke egnede til overflader med termisk isolerende materiale Ⓢ Светильники не предназначены для покрытия термоизоляционным материалом Ⓢ A lámpatestet nem fedheti hőszigetelő anyaggal Ⓢ Opraw nie można przykrywać materiałem termoizolacyjnym Ⓢ Svetidlo sa nesmie pokrývať tepelne izolačným materiálom Ⓢ Svetilke niso primerne za prekrivanje s termoizolacijskim materialom Ⓢ Armatürler termal izole edici malzeme ile kaplanması uygun değildir Ⓢ Svjetiljka nije pogodna za prekrivanje sa materijalom koji izolira toplinu Ⓢ Acest corp de iluminat nu se poate fi acoperit de material izolat termic Ⓢ Осветелителни тела не подлежат за покриване с термично изолиращи материали Ⓢ Valgustit ei tohi kinni katta Ⓢ Neuzdengiti šilumos nepraleidžiančiomis medžiagomis Ⓢ Gaismekļi nav piemēroti pārklāšanai ar termāli neizturīgiem materiāliem Ⓢ Sveiljke nису погодне за prekrivanje termički izolacionim materijalom Ⓢ Світльники не розраховані на покривання термоізоляційним матеріалом Ⓢ Шыгардандарды жылу реттегіш материалмен қаптауға келмейді



Ⓢ Die in dieser Leuchte enthaltene Lichtquelle und das Betriebsgerät dürfen nur durch den Hersteller, seinem Kundendienst oder einer ähnlichen qualifizierten Person ausgetauscht werden. Ⓢ The light source and the controlgear contained in this luminaire shall only be replaced by the manufacturer or their service agent or a skilled qualified person.

Ⓢ La source lumineuse et l'appareil de commande contenus dans ce luminaire ne peuvent être remplacés que par le fabricant, son service après-vente ou une personne qualifiée. Ⓢ La sorgente luminosa e l'alimentatore contenuti in questo apparecchio possono essere sostituiti solo dal costruttore, dal suo centro di assistenza o da personale qualificato. Ⓢ La fuente de luz y el equipo de control contenidos en esta luminaria solo deben ser reemplazados por el fabricante, su servicio técnico o una persona calificada. Ⓢ A fonte de luz e o equipamento de controlo contidos nesta luminária só podem ser substituídos pelo fabricante, pelo seu serviço autorizado ou por pessoa qualificada. Ⓢ Η πηγή φωτός και το σύστημα ελέγχου που περιέχονται σε αυτό το φωτιστικό μπορούν να αντικατασταθούν μόνο από τον κατασκευαστή, τον εξουσιοδοτημένο τεχνικό του ή από κατάλληλα εκπαιδευμένο άτομο. Ⓢ De lichtbron en het voorschakelapparaat in dit armatuur mogen uitsluitend worden vervangen door de fabrikant, diens servicepartner of een vakbekwaam persoon. Ⓢ Ljuskällan och drittdonet i denna armatur får endast bytas av tillverkaren, dess ser-vicepartner eller en fackkunnig person. Ⓢ Tämän valaisimen valonlähteen ja liitäntälaitteen saa vaihtaa vain valmistaja, sen huolto tai pätevä henkilö. Ⓢ Lyskilden og forkoblingen i denne armaturen skal kun skiftes av produsenten, hans servicepartner eller en kvalifisert person. Ⓢ Lyskilden og forkoblingen i dette armatur må kun udskiftes af producenten, dennes servicepartner eller en kvalificeret person. Ⓢ Světelný zdroj a předradník v tomto svítidle smí vyměnit pouze výrobce, jeho servis nebo kvalifikovaná osoba. Ⓢ Источник света и пускорегулирующую аппаратуру в данном светильнике могут заменять только производитель, его сервисная служба или квалифицированное лицо. Ⓢ A világítótestben lévő fényforrást és előtétet csak a gyártó, annak szervize vagy képzett személy cserélheti. Ⓢ Žródlo światła i zasilacz znajdujące się w tej oprawie mogą być wymieniane wyłącznie przez producenta, jego serwis lub osobę wykwalifikowaną. Ⓢ Svetelný zdroj a predradník v tomto svietidle smie vymieňať len výrobca, jeho servis alebo kvalifikovaná osoba. Ⓢ Svetlobni vir in napajalnik v tej svetilki lahko zamenja le proizvajalec, njegov servis ali usposobljena oseba. Ⓢ Bu armatürdeki ışık kaynağı ve kontrol donanımı yalnızca üretici, yetkili servis veya yetkin bir kişi tarafından değiştirilebilir. Ⓢ Izvor svetla i upravljački uređaj u ovoj svetiljci smiju zamjenjivati samo proizvođač, njegov servis ili kvalificirana osoba. Ⓢ Sursa de lumină și balastul conținute în acest corp de iluminat pot fi înlocuite doar de producător, de serviciul său autorizat sau de o persoană calificată. Ⓢ Светлинният източник и апаратът в това осветително тяло могат да се подменят само от производителя, неговия сервис или квалифицирано лице. Ⓢ Selles valgustis olevat valgusalikkat ja toiteplokki võib vahetada ainult tootja, tema hoolduspartner või kvalifitseeritud isik. Ⓢ Siame švieslute esant šviesos šaltinį ir maitinimo įrenginį gali keisti tik gamintojas, jo servisas arba kvalifikuotas asmuo. Ⓢ Šā gaismekļa gaismas avotu i vadības ierīci drīkst nomainīt tikai ražotājs, viņa serviss vai kvalificēta persona. Ⓢ Izvor svetlosti i upravljački uređaj u ovoj svetiljci smeju da zamene samo proizvođač, njegov servis ili kvalifikovano lice. Ⓢ Джерело світла та пускорегулювальний апарат у цьому світильнику можуть замінювати лише виробник, його сервис або кваліфікована особа. Ⓢ Осы шамдагы жарык көзін және басқару құрылғысын тек өндіруші, оның сервистік өкілі немесе білікті адам ғана ауыстыра алады.



5MA69-271635\_aa  
18.12.2025 / PZ

Siteco GmbH  
Georg-Simon-Ohm-Straße 50  
83301 Traunreut, Germany  
mail: [technicalsupport@siteco.de](mailto:technicalsupport@siteco.de)  
Phone: +49 8669 / 33-844  
[www.siteco.com](http://www.siteco.com)