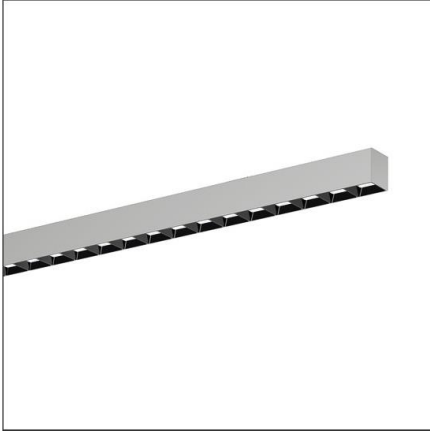


## Lichttechnischer Prüfbefund

Familie  
Silica® 21

Bestell-Nr.: 51MX21TAT4S  
EAN: 4058352687154

LP-Nummer  
59274\_121



**Ausführung** Anbauleuchte, Reflektor, schwarz, direkt strahlend, eng strahlend,  $UGR \leq 19$  ( $L65 \leq 3000 \text{ cd/m}^2$ ), Tunable White

**Bestückung** LED 6500 K | CRI  $\geq 80$

**Betriebsgerät** EVG-DALI

**Einstellung** indiv. Einstellung

**Bemessungswerte** Nettolichtstrom = 3720 lm  
Systemleistung = 32.2 W  
Lichtausbeute = 115.5 lm/W

Seriendokumentation  
03.05.2023

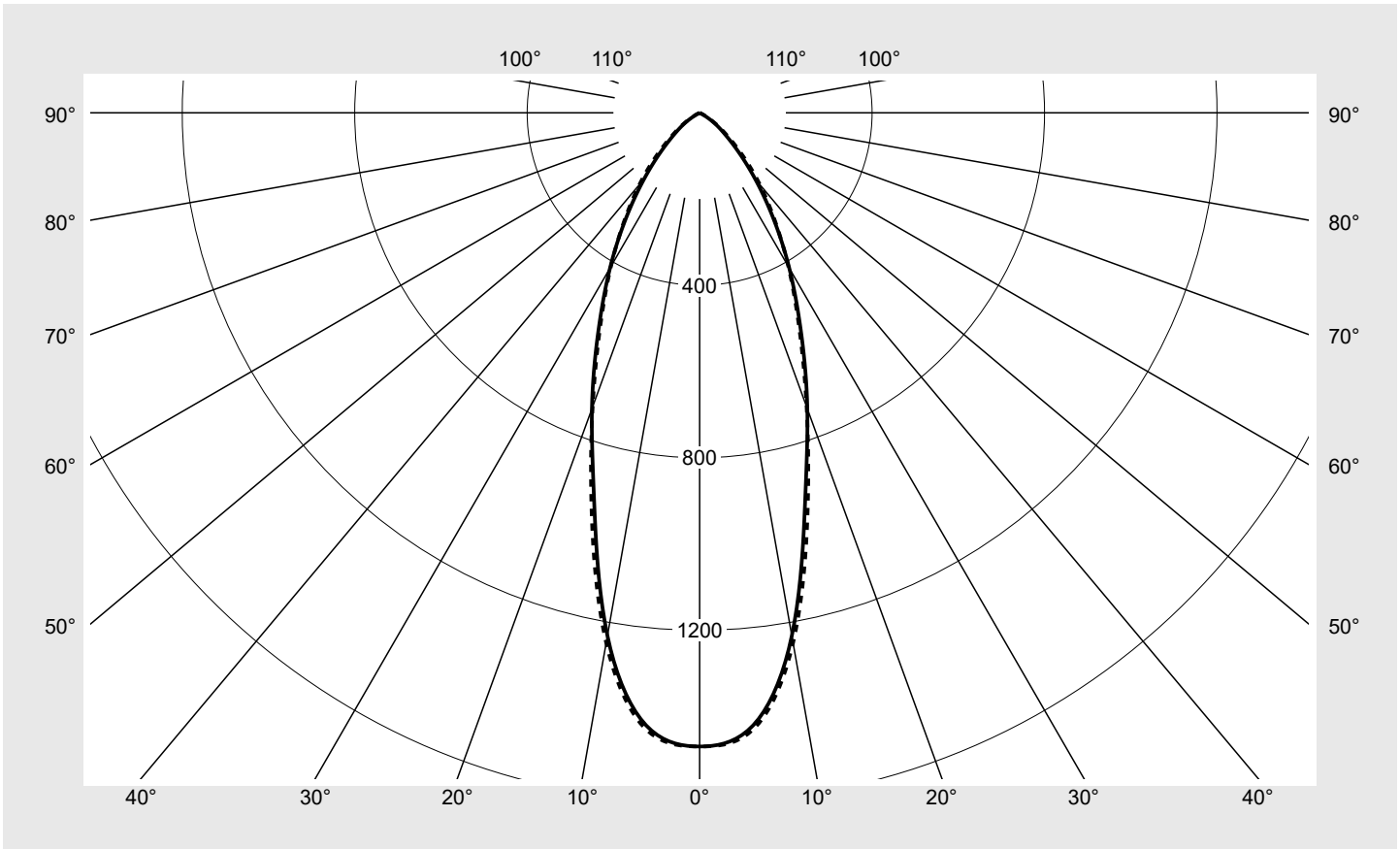
siteco

Lichtstärke in cd/klm

C180-0

C270-90

Imax: 1470 cd/klm



## Klassifizierungen

DIN 5040 A 7 0  
CIE N1=85 N2=99 N3=100  
N4=100 N5=100

## Leuchtenbetriebswirkungsgrade

$\eta_{LB}$  100,0%  
 $\phi_u$  100,0%  
 $\phi_o$  0,0%

## Messbedingungen

DIN EN 13032 und DIN 5032

## Lichttechnischer Prüfbefund

<b>Familie</b> <b>Silica® 21</b>	<b>Bestell-Nr.: 51MX21TAT4S</b> <b>EAN: 4058352687154</b>	<b>LP-Nummer</b> <b>59274_121</b>
<b>Wertetabelle Lichtstärkemessung</b>		<b>Maximale Lichtstärke</b>
		<b>siteco</b>

C- Ebenen	0° 180°	15°	30°	45°	60°	75°	90° 270°	Phi-Zone	Summe Phi-Zone
		165° 195° 345°	150° 210° 330°	135° 225° 315°	120° 240° 300°	105° 255° 285°			
γ									
Lichtstärke in cd/klm									
Lichtstrom in lm/klm									
0°	1469.7	1469.7	1469.7	1469.7	1469.7	1469.7	1469.7	8.8	8.8
5°	1425.9	1423.7	1417.2	1426.5	1433.0	1431.2	1434.7	68.2	77.0
10°	1231.5	1233.2	1235.5	1249.4	1249.6	1243.0	1248.1	118.2	195.2
15°	943.7	950.9	962.6	981.4	980.5	965.2	966.6	137.0	332.2
20°	730.3	729.1	721.8	719.8	726.6	719.9	725.4	135.8	468.0
25°	554.7	552.6	536.3	523.0	531.2	537.4	545.0	124.7	592.7
30°	415.7	413.6	392.8	386.6	400.6	405.5	411.7	110.2	702.9
35°	297.0	298.7	284.3	282.2	303.6	308.4	303.5	93.1	796.0
40°	200.5	204.3	201.1	204.4	221.4	223.2	217.2	74.2	870.2
45°	125.8	129.2	131.9	140.1	150.2	148.5	143.7	53.9	924.1
50°	74.7	77.5	82.6	89.5	95.9	91.3	86.7	36.2	960.3
55°	42.1	44.5	49.0	54.2	57.0	52.1	48.8	22.6	982.9
60°	13.9	17.2	26.8	30.8	30.6	21.8	18.2	11.3	994.3
65°	4.2	5.3	8.3	15.7	9.7	6.0	5.5	4.1	998.4
70°	1.8	1.9	1.6	3.1	2.1	2.4	2.5	1.1	999.6
75°	0.4	0.5	0.5	0.7	0.7	0.7	0.5	0.3	999.9
80°	0.1	0.1	0.1	0.1	0.2	0.2	0.2	0.1	999.9
85°	0.1	0.1	0.1	0.1	0.2	0.2	0.2	0.1	1000.0
90°	0.0	0.0	0.0	0.0	0.0	0.0	0.0	0.0	1000.0
95°	0.0	0.0	0.0	0.0	0.0	0.0	0.0	0.0	1000.0
100°	0.0	0.0	0.0	0.0	0.0	0.0	0.0	0.0	1000.0
105°	0.0	0.0	0.0	0.0	0.0	0.0	0.0	0.0	1000.0
110°	0.0	0.0	0.0	0.0	0.0	0.0	0.0	0.0	1000.0
115°	0.0	0.0	0.0	0.0	0.0	0.0	0.0	0.0	1000.0
120°	0.0	0.0	0.0	0.0	0.0	0.0	0.0	0.0	1000.0
125°	0.0	0.0	0.0	0.0	0.0	0.0	0.0	0.0	1000.0
130°	0.0	0.0	0.0	0.0	0.0	0.0	0.0	0.0	1000.0
135°	0.0	0.0	0.0	0.0	0.0	0.0	0.0	0.0	1000.0
140°	0.0	0.0	0.0	0.0	0.0	0.0	0.0	0.0	1000.0
145°	0.0	0.0	0.0	0.0	0.0	0.0	0.0	0.0	1000.0
150°	0.0	0.0	0.0	0.0	0.0	0.0	0.0	0.0	1000.0
155°	0.0	0.0	0.0	0.0	0.0	0.0	0.0	0.0	1000.0
160°	0.0	0.0	0.0	0.0	0.0	0.0	0.0	0.0	1000.0
165°	0.0	0.0	0.0	0.0	0.0	0.0	0.0	0.0	1000.0
170°	0.0	0.0	0.0	0.0	0.0	0.0	0.0	0.0	1000.0
175°	0.0	0.0	0.0	0.0	0.0	0.0	0.0	0.0	1000.0
180°	0.0	0.0	0.0	0.0	0.0	0.0	0.0	0.0	1000.0

## Lichttechnischer Prüfbefund

<b>Familie</b> Silica® 21	<b>Bestell-Nr.: 51MX21TAT4S</b> <b>EAN: 4058352687154</b>	<b>LP-Nummer</b> 59274_121
------------------------------	--	-------------------------------

UGR-Tabelle		Standardraum									
Raumabmessungen		Blickrichtung quer zur Leuchte (C0)					Blickrichtung längs zur Leuchte (C90)				
x	y										
2H	2H	16,6	17,9	17,0	18,2	18,5	17,2	18,5	17,6	18,8	19,1
	3H	16,5	17,6	16,9	17,9	18,3	17,1	18,2	17,5	18,5	18,9
	4H	16,4	17,4	16,8	17,8	18,1	17,0	18,0	17,4	18,4	18,8
	6H	16,4	17,2	16,8	17,6	18,0	17,0	17,9	17,4	18,2	18,6
	8H	16,4	17,2	16,8	17,5	18,0	17,0	17,8	17,5	18,2	18,6
	12H	16,4	17,1	16,8	17,5	17,9	17,0	17,7	17,4	18,1	18,5
4H	2H	16,6	17,6	17,0	17,9	18,3	17,2	18,2	17,6	18,5	18,9
	3H	16,4	17,3	16,9	17,6	18,1	17,0	17,8	17,5	18,2	18,6
	4H	16,4	17,1	16,8	17,5	17,9	16,9	17,6	17,4	18,1	18,5
	6H	16,3	16,9	16,7	17,3	17,8	16,9	17,5	17,3	17,9	18,4
	8H	16,2	16,8	16,7	17,2	17,7	16,8	17,3	17,3	17,8	18,3
	12H	16,2	16,7	16,7	17,1	17,6	16,8	17,2	17,3	17,7	18,2
8H	4H	16,2	16,8	16,7	17,2	17,7	16,8	17,3	17,3	17,8	18,3
	6H	16,1	16,6	16,6	17,0	17,5	16,7	17,1	17,2	17,6	18,1
	8H	16,1	16,4	16,6	16,9	17,5	16,6	17,0	17,1	17,5	18,0
	12H	16,0	16,3	16,6	16,8	17,4	16,6	16,9	17,1	17,4	18,0
12H	4H	16,2	16,7	16,7	17,1	17,6	16,8	17,2	17,3	17,7	18,2
	6H	16,1	16,4	16,6	16,9	17,5	16,7	17,0	17,2	17,5	18,0
	8H	16,0	16,3	16,6	16,8	17,4	16,6	16,9	17,1	17,4	18,0

<b>Leuchtdichten-Tabelle</b> Max. für $\gamma \geq 65^\circ$	<b>Lichttechnische Abmessungen in mm:</b> L = 1176 B = 49
--	--

C- Ebenen	$\gamma$	Leuchtdichte in cd/m <sup>2</sup>						
		0° 180°	15° 165° 195° 345°	30° 150° 210° 330°	45° 135° 225° 315°	60° 120° 240° 300°	75° 105° 255° 285°	90° 270°
45°		11481.0	11794.1	12044.7	12792.5	13711.6	13561.9	13115.7
50°		7504.0	7783.0	8297.8	8984.0	9628.1	9169.6	8703.1
55°		4738.3	5006.9	5511.6	6098.8	6410.3	5861.2	5487.0
60°		1797.5	2215.8	3464.6	3982.0	3945.0	2813.8	2344.9
65°		640.5	811.4	1274.4	2400.2	1484.8	922.2	835.6
70°		339.9	362.4	307.5	581.0	394.9	457.7	476.6
75°		90.3	126.0	123.7	164.1	164.1	162.9	133.2
80°		32.0	35.3	42.4	51.3	63.9	78.1	78.1
85°		56.3	56.3	70.4	88.1	112.6	134.1	148.1

**Lichttechnischer Prüfbefund**

<b>Familie</b> Silica® 21	<b>Bestell-Nr.: 51MX21TAT4S</b> <b>EAN: 4058352687154</b>	<b>LP-Nummer</b> <b>59274_121</b>
------------------------------	--	--------------------------------------

**Leuchtdichten in cd/m<sup>2</sup>**      γ 65°    γ 70°    γ 75°    γ 80°    γ 85°      **siteco**

