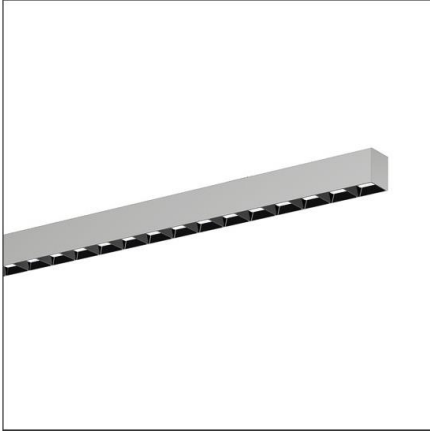


Lichttechnischer Prüfbefund

Familie
Silica® 21

Bestell-Nr.: 51MX22TBT5S
EAN: 4058352687253

LP-Nummer
59272_129



Ausführung Anbauleuchte, Reflektor, schwarz, direkt strahlend, breit strahlend, UGR≤19 (L65≤1000cd/m²), Tunable White

Bestückung LED 4000 K | CRI ≥ 80

Betriebsgerät EVG-DALI

Einstellung Werkseinstellung

Bemessungswerte Nettolichtstrom = 4650 lm
Systemleistung = 42.2 W
Lichtausbeute = 110.2 lm/W

Seriendokumentation
03.05.2023

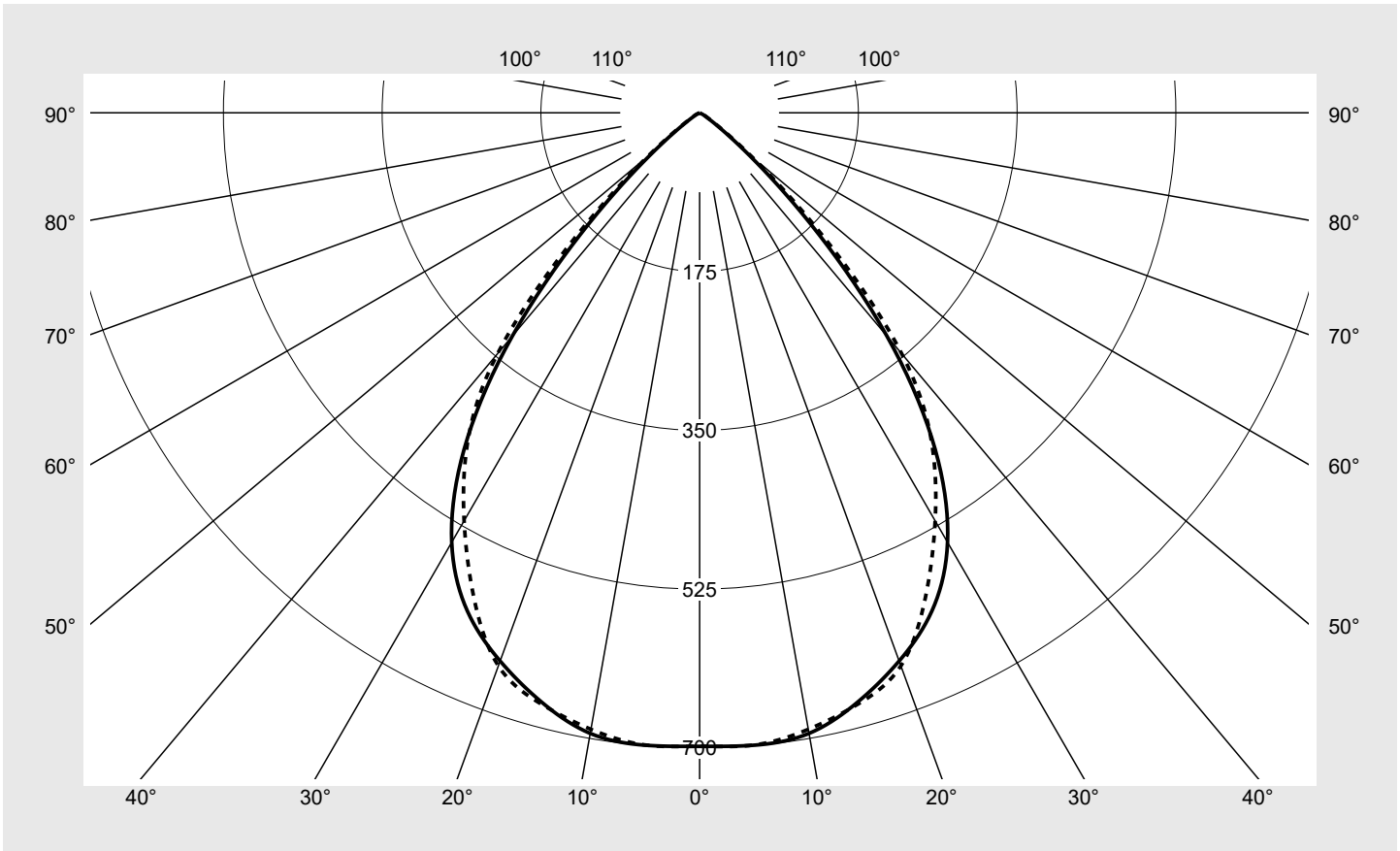
siteco

Lichtstärke in cd/klm

C180-0

C270-90

Imax: 700 cd/klm



Klassifizierungen

DIN 5040 A 6 0
CIE N1=84 N2=99 N3=100
N4=100 N5=100

Leuchtenbetriebswirkungsgrade

η_{LB} 100,0%
 ϕ_u 100,0%
 ϕ_o 0,0%

Messbedingungen

DIN EN 13032 und DIN 5032

Lichttechnischer Prüfbefund

Familie Silica® 21	Bestell-Nr.: 51MX22TBT5S EAN: 4058352687253	LP-Nummer 59272_129
-------------------------------------	--	--------------------------------------

Wertetabelle Lichtstärkemessung	Maximale Lichtstärke	sITeco
--	-----------------------------	---------------

C- Ebenen	0° 180°	15°	30°	45°	60°	75°	90° 270°	Phi-Zone	Summe Phi-Zone
		165° 195° 345°	150° 210° 330°	135° 225° 315°	120° 240° 300°	105° 255° 285°			
γ									
Lichtstärke in cd/klm									
Lichtstrom in lm/klm									
0°	698.3	698.3	698.3	698.3	698.3	698.3	698.3	4.2	4.2
5°	699.6	698.5	693.9	696.9	698.4	696.4	699.4	33.3	37.5
10°	694.6	694.5	689.5	695.3	694.0	687.7	690.0	65.9	103.4
15°	672.6	676.2	675.2	682.1	683.0	677.2	674.7	96.2	199.5
20°	643.1	649.9	651.2	653.1	656.2	653.1	648.8	122.2	321.7
25°	605.9	614.8	613.8	608.6	601.9	597.0	589.1	140.3	462.0
30°	546.6	557.0	551.8	537.6	523.2	517.8	519.3	147.1	609.1
35°	452.6	459.5	452.6	444.2	440.2	442.2	446.7	140.9	750.0
40°	321.1	327.1	329.4	337.0	343.8	344.5	346.6	118.4	868.3
45°	172.2	187.2	203.3	211.2	210.4	196.6	193.1	77.0	945.3
50°	63.8	73.4	88.4	94.7	94.6	78.0	74.0	34.9	980.1
55°	17.5	22.2	30.2	37.1	33.0	23.7	21.3	12.4	992.5
60°	5.9	7.1	10.7	14.2	11.5	8.5	8.2	4.7	997.2
65°	2.1	2.5	3.7	4.8	4.2	3.3	3.2	1.8	998.9
70°	1.4	1.5	1.1	1.1	1.3	1.7	1.7	0.7	999.6
75°	0.3	0.4	0.3	0.5	0.4	0.5	0.5	0.2	999.9
80°	0.1	0.1	0.1	0.1	0.2	0.2	0.2	0.1	999.9
85°	0.0	0.0	0.1	0.1	0.1	0.2	0.2	0.1	1000.0
90°	0.0	0.0	0.0	0.0	0.0	0.0	0.0	0.0	1000.0
95°	0.0	0.0	0.0	0.0	0.0	0.0	0.0	0.0	1000.0
100°	0.0	0.0	0.0	0.0	0.0	0.0	0.0	0.0	1000.0
105°	0.0	0.0	0.0	0.0	0.0	0.0	0.0	0.0	1000.0
110°	0.0	0.0	0.0	0.0	0.0	0.0	0.0	0.0	1000.0
115°	0.0	0.0	0.0	0.0	0.0	0.0	0.0	0.0	1000.0
120°	0.0	0.0	0.0	0.0	0.0	0.0	0.0	0.0	1000.0
125°	0.0	0.0	0.0	0.0	0.0	0.0	0.0	0.0	1000.0
130°	0.0	0.0	0.0	0.0	0.0	0.0	0.0	0.0	1000.0
135°	0.0	0.0	0.0	0.0	0.0	0.0	0.0	0.0	1000.0
140°	0.0	0.0	0.0	0.0	0.0	0.0	0.0	0.0	1000.0
145°	0.0	0.0	0.0	0.0	0.0	0.0	0.0	0.0	1000.0
150°	0.0	0.0	0.0	0.0	0.0	0.0	0.0	0.0	1000.0
155°	0.0	0.0	0.0	0.0	0.0	0.0	0.0	0.0	1000.0
160°	0.0	0.0	0.0	0.0	0.0	0.0	0.0	0.0	1000.0
165°	0.0	0.0	0.0	0.0	0.0	0.0	0.0	0.0	1000.0
170°	0.0	0.0	0.0	0.0	0.0	0.0	0.0	0.0	1000.0
175°	0.0	0.0	0.0	0.0	0.0	0.0	0.0	0.0	1000.0
180°	0.0	0.0	0.0	0.0	0.0	0.0	0.0	0.0	1000.0

Lichttechnischer Prüfbefund

Familie Silica® 21	Bestell-Nr.: 51MX22TBT5S EAN: 4058352687253	LP-Nummer 59272_129
------------------------------	--	-------------------------------

UGR-Tabelle		Standardraum									
		Blickrichtung quer zur Leuchte (C0)					Blickrichtung längs zur Leuchte (C90)				
Raumabmessungen											
x	y										
2H	2H	18,6	19,9	19,0	20,2	20,6	18,7	20,0	19,1	20,4	20,7
	3H	18,5	19,6	18,9	20,0	20,3	18,6	19,8	19,0	20,1	20,4
	4H	18,4	19,5	18,8	19,8	20,2	18,5	19,6	18,9	19,9	20,3
	6H	18,4	19,3	18,8	19,7	20,1	18,5	19,4	18,9	19,8	20,2
	8H	18,4	19,2	18,8	19,6	20,0	18,5	19,3	18,9	19,7	20,1
	12H	18,4	19,1	18,8	19,5	19,9	18,5	19,2	18,9	19,6	20,1
4H	2H	18,5	19,5	18,9	19,9	20,2	18,6	19,6	19,0	20,0	20,3
	3H	18,3	19,2	18,7	19,6	20,0	18,4	19,3	18,8	19,7	20,1
	4H	18,2	19,0	18,7	19,4	19,8	18,3	19,1	18,8	19,5	19,9
	6H	18,1	18,8	18,6	19,2	19,7	18,3	18,9	18,7	19,3	19,8
	8H	18,1	18,7	18,6	19,1	19,6	18,2	18,8	18,7	19,2	19,7
	12H	18,1	18,6	18,6	19,0	19,5	18,2	18,7	18,7	19,1	19,6
8H	4H	18,1	18,7	18,6	19,1	19,6	18,2	18,8	18,7	19,2	19,7
	6H	18,0	18,5	18,5	18,9	19,5	18,1	18,6	18,6	19,1	19,6
	8H	17,9	18,4	18,4	18,8	19,4	18,0	18,5	18,6	19,0	19,5
	12H	17,9	18,2	18,4	18,7	19,3	18,0	18,4	18,6	18,9	19,4
12H	4H	18,1	18,6	18,6	19,0	19,5	18,2	18,7	18,7	19,1	19,6
	6H	18,0	18,4	18,5	18,8	19,4	18,1	18,5	18,6	19,0	19,5
	8H	17,9	18,2	18,4	18,7	19,3	18,0	18,4	18,6	18,9	19,4

Leuchtdichten-Tabelle Max. für $\gamma \geq 65^\circ$	Lichttechnische Abmessungen in mm: L = 1470 B = 49
--	--

C- Ebenen	γ	Leuchtdichte in cd/m ²							
		0° 180°	15° 165° 195° 345°	30° 150° 210° 330°	45° 135° 225° 315°	60° 120° 240° 300°	75° 105° 255° 285°	90° 270°	
45°		15725.2	17086.3	18560.6	19278.1	19212.9	17951.7	17629.9	
50°		6408.6	7376.3	8881.8	9511.4	9497.6	7836.5	7432.3	
55°		1966.5	2494.6	3397.9	4177.4	3714.3	2661.8	2393.3	
60°		763.8	919.4	1380.1	1837.0	1479.1	1094.1	1054.1	
65°		326.0	385.7	558.8	735.7	645.4	500.6	489.0	
70°		257.1	274.3	208.6	204.0	247.3	319.2	327.3	
75°		76.1	101.0	84.3	117.7	109.2	128.2	116.5	
80°		21.2	24.9	35.3	46.1	60.2	71.0	74.4	
85°		28.1	31.9	52.6	74.1	102.2	130.4	141.5	

Lichttechnischer Prüfbefund

Familie Silica® 21	Bestell-Nr.: 51MX22TBT5S EAN: 4058352687253	LP-Nummer 59272_129
-------------------------------------	--	--------------------------------------

Leuchtdichten in cd/m² γ 65° γ 70° γ 75° γ 80° γ 85° **siteco**

