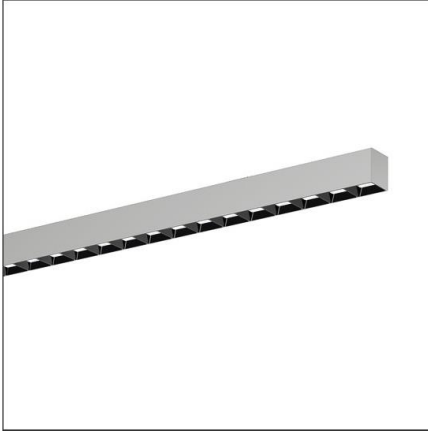


Lichttechnischer Prüfbefund

Familie
Silica® 21

Bestell-Nr.: 51MX24TAT4S
EAN: 4058352687376

LP-Nummer
59276_121



Ausführung Anbauleuchte, Reflektor, schwarz, direkt strahlend, asymmetrisch strahlend, Tunable White

Bestückung LED 6500 K | CRI ≥ 80

Betriebsgerät EVG-DALI

Einstellung indiv. Einstellung

Bemessungswerte Nettolichtstrom = 3280 lm
Systemleistung = 32.4 W
Lichtausbeute = 101.2 lm/W

Seriendokumentation
03.05.2023

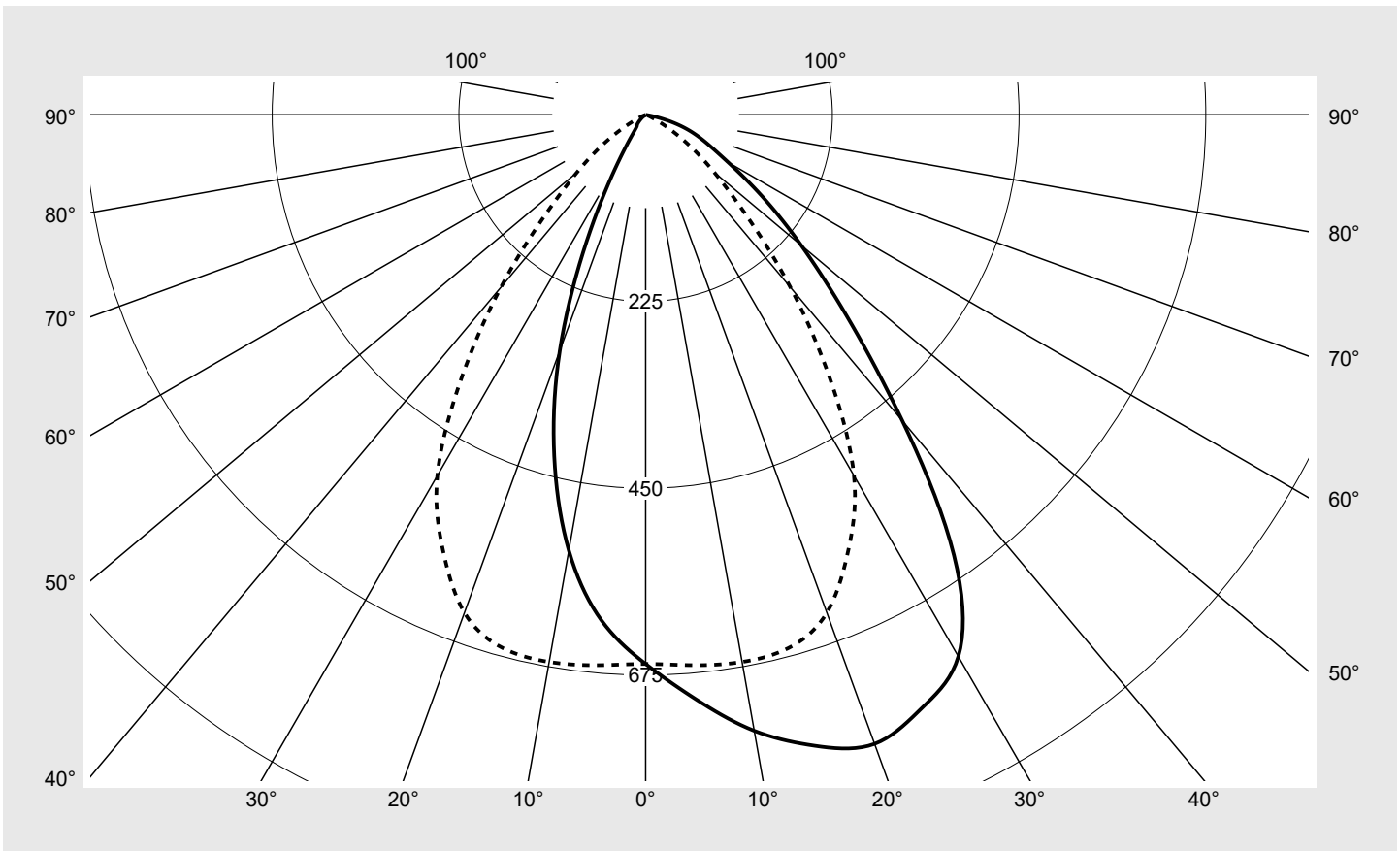
siteco

Lichtstärke in cd/klm

C180-0

C270-90

Imax: 826 cd/klm



Klassifizierungen

DIN 5040 A 6 0
CIE N1=74 N2=94 N3=99
N4=100 N5=100

Leuchtenbetriebswirkungsgrade

η_{LB} 100,0%
 ϕ_u 100,0%
 ϕ_o 0,0%

Messbedingungen

DIN EN 13032 und DIN 5032

Lichttechnischer Prüfbefund

Familie Silica® 21	Bestell-Nr.: 51MX24TAT4S EAN: 4058352687376	LP-Nummer 59276_121
Wertetabelle Lichtstärkemessung		Maximale Lichtstärke
		siteco

C- Ebenen	0°	15° 345°	30° 330°	45° 315°	60° 300°	75° 285°	90° 270°
γ	Lichtstärke in cd/klm						
0°	661.7	661.7	661.7	661.7	661.7	661.7	661.7
5°	707.6	708.8	701.1	699.3	690.5	675.5	665.7
10°	753.6	757.8	748.0	742.6	724.7	696.1	669.4
15°	787.1	797.8	794.5	785.9	757.5	712.8	665.2
20°	806.6	820.5	826.5	809.8	762.2	699.9	638.5
25°	788.4	808.5	803.3	771.2	718.7	652.8	578.2
30°	753.6	764.4	743.7	689.2	630.6	560.4	502.1
35°	647.7	641.5	628.6	587.6	522.2	450.6	386.5
40°	481.1	487.8	495.5	479.3	412.9	335.0	271.3
45°	342.4	353.2	375.0	376.0	318.8	233.5	172.1
50°	244.7	248.8	274.8	282.8	235.7	157.9	107.9
55°	171.3	177.5	199.4	208.0	176.1	105.7	63.9
60°	115.1	122.4	144.6	155.8	127.0	61.7	29.2
65°	81.5	86.1	102.4	113.9	84.3	29.7	9.5
70°	56.7	63.4	75.3	76.6	47.3	14.7	3.6
75°	29.5	36.2	51.5	39.1	25.8	8.2	1.2
80°	5.4	7.7	15.3	17.0	11.4	3.4	0.5
85°	1.1	1.3	2.4	2.3	0.8	0.3	0.3
90°	0.0	0.0	0.0	0.0	0.0	0.0	0.0
95°	0.0	0.0	0.0	0.0	0.0	0.0	0.0
100°	0.0	0.0	0.0	0.0	0.0	0.0	0.0
105°	0.0	0.0	0.0	0.0	0.0	0.0	0.0
110°	0.0	0.0	0.0	0.0	0.0	0.0	0.0
115°	0.0	0.0	0.0	0.0	0.0	0.0	0.0
120°	0.0	0.0	0.0	0.0	0.0	0.0	0.0
125°	0.0	0.0	0.0	0.0	0.0	0.0	0.0
130°	0.0	0.0	0.0	0.0	0.0	0.0	0.0
135°	0.0	0.0	0.0	0.0	0.0	0.0	0.0
140°	0.0	0.0	0.0	0.0	0.0	0.0	0.0
145°	0.0	0.0	0.0	0.0	0.0	0.0	0.0
150°	0.0	0.0	0.0	0.0	0.0	0.0	0.0
155°	0.0	0.0	0.0	0.0	0.0	0.0	0.0
160°	0.0	0.0	0.0	0.0	0.0	0.0	0.0
165°	0.0	0.0	0.0	0.0	0.0	0.0	0.0
170°	0.0	0.0	0.0	0.0	0.0	0.0	0.0
175°	0.0	0.0	0.0	0.0	0.0	0.0	0.0
180°	0.0	0.0	0.0	0.0	0.0	0.0	0.0

Lichttechnischer Prüfbefund

Familie Silica® 21	Bestell-Nr.: 51MX24TAT4S EAN: 4058352687376	LP-Nummer 59276_121
Wertetabelle Lichtstärkemessung		Maximale Lichtstärke
		siteco

C- Ebenen	105° 255°	120° 240°	135° 225°	150° 210°	165° 195°	180°	Phi-Zone	Summe Phi-Zone
γ	Lichtstärke in cd/klm						Lichtstrom in lm/klm	
0°	661.7	661.7	661.7	661.7	661.7	661.7	4.0	4.0
5°	650.2	639.3	625.2	613.2	610.8	611.4	31.6	35.6
10°	635.2	606.4	576.8	550.6	537.8	533.0	62.6	98.1
15°	612.2	559.4	505.1	459.9	436.0	425.6	90.9	189.1
20°	565.1	489.6	412.9	351.3	314.5	302.5	113.2	302.3
25°	497.5	409.8	322.4	247.7	191.9	168.1	125.1	427.4
30°	412.4	312.9	216.8	129.1	80.3	67.5	124.5	551.9
35°	304.3	218.0	125.8	57.5	28.2	23.1	112.3	664.2
40°	195.6	132.8	62.5	24.4	17.4	16.1	92.9	757.1
45°	117.9	72.0	27.4	15.9	12.0	11.0	72.7	829.8
50°	70.5	38.1	14.7	10.4	7.3	6.2	55.1	884.8
55°	41.0	19.6	9.0	6.3	3.7	3.2	41.1	925.9
60°	17.5	9.3	5.4	3.7	2.8	2.3	29.2	955.1
65°	5.6	4.4	3.2	2.6	1.9	1.3	20.1	975.2
70°	2.1	2.0	1.8	1.4	1.0	0.6	13.6	988.8
75°	0.8	0.9	0.9	0.8	0.6	0.5	8.0	996.8
80°	0.5	0.5	0.5	0.5	0.4	0.4	2.7	999.5
85°	0.4	0.4	0.4	0.4	0.3	0.3	0.5	1000.0
90°	0.0	0.0	0.0	0.0	0.0	0.0	0.0	1000.0
95°	0.0	0.0	0.0	0.0	0.0	0.0	0.0	1000.0
100°	0.0	0.0	0.0	0.0	0.0	0.0	0.0	1000.0
105°	0.0	0.0	0.0	0.0	0.0	0.0	0.0	1000.0
110°	0.0	0.0	0.0	0.0	0.0	0.0	0.0	1000.0
115°	0.0	0.0	0.0	0.0	0.0	0.0	0.0	1000.0
120°	0.0	0.0	0.0	0.0	0.0	0.0	0.0	1000.0
125°	0.0	0.0	0.0	0.0	0.0	0.0	0.0	1000.0
130°	0.0	0.0	0.0	0.0	0.0	0.0	0.0	1000.0
135°	0.0	0.0	0.0	0.0	0.0	0.0	0.0	1000.0
140°	0.0	0.0	0.0	0.0	0.0	0.0	0.0	1000.0
145°	0.0	0.0	0.0	0.0	0.0	0.0	0.0	1000.0
150°	0.0	0.0	0.0	0.0	0.0	0.0	0.0	1000.0
155°	0.0	0.0	0.0	0.0	0.0	0.0	0.0	1000.0
160°	0.0	0.0	0.0	0.0	0.0	0.0	0.0	1000.0
165°	0.0	0.0	0.0	0.0	0.0	0.0	0.0	1000.0
170°	0.0	0.0	0.0	0.0	0.0	0.0	0.0	1000.0
175°	0.0	0.0	0.0	0.0	0.0	0.0	0.0	1000.0
180°	0.0	0.0	0.0	0.0	0.0	0.0	0.0	1000.0

Lichttechnischer Prüfbefund

Familie Silica® 21	Bestell-Nr.: 51MX24TAT4S EAN: 4058352687376	LP-Nummer 59276_121
------------------------------	--	-------------------------------

UGR-Tabelle		Standardraum									
		Blickrichtung quer zur Leuchte (C0)					Blickrichtung längs zur Leuchte (C90)				
Raumabmessungen											
x	y										
2H	2H	23,8	25,2	24,1	25,5	25,8	19,7	21,1	20,0	21,4	21,7
	3H	24,3	25,5	24,7	25,9	26,2	19,6	20,9	20,0	21,2	21,6
	4H	24,4	25,6	24,8	25,9	26,3	19,6	20,7	20,0	21,1	21,4
	6H	24,4	25,5	24,8	25,8	26,2	19,5	20,5	19,9	20,9	21,3
	8H	24,4	25,4	24,8	25,8	26,2	19,5	20,5	19,9	20,8	21,2
	12H	24,4	25,3	24,9	25,7	26,1	19,5	20,4	19,9	20,8	21,2
4H	2H	24,2	25,3	24,6	25,7	26,0	20,4	21,6	20,8	21,9	22,3
	3H	24,9	25,9	25,4	26,3	26,7	20,6	21,5	21,0	21,9	22,3
	4H	25,2	26,0	25,6	26,4	26,9	20,5	21,4	21,0	21,8	22,2
	6H	25,2	25,9	25,7	26,4	26,8	20,5	21,2	20,9	21,6	22,1
	8H	25,2	25,8	25,6	26,3	26,8	20,5	21,1	20,9	21,6	22,0
	12H	25,2	25,7	25,7	26,2	26,7	20,4	21,0	20,9	21,5	22,0
8H	4H	25,3	25,9	25,7	26,4	26,8	20,8	21,4	21,3	21,9	22,4
	6H	25,3	25,8	25,8	26,3	26,8	20,8	21,3	21,3	21,8	22,3
	8H	25,3	25,7	25,8	26,2	26,7	20,7	21,2	21,2	21,7	22,2
	12H	25,2	25,6	25,8	26,1	26,7	20,7	21,1	21,2	21,6	22,1
12H	4H	25,3	25,8	25,8	26,3	26,8	20,8	21,4	21,3	21,8	22,3
	6H	25,3	25,7	25,8	26,2	26,8	20,8	21,2	21,3	21,7	22,2
	8H	25,3	25,6	25,8	26,1	26,7	20,8	21,1	21,3	21,6	22,2

Leuchtdichten-Tabelle		Max. für $\gamma \geq 65^\circ$												
		Lichttechnische Abmessungen in mm:												
		L = 1176												
		B = 49												
C-Ebenen		0°	15° 345°	30° 330°	45° 315°	60° 300°	75° 285°	90° 270°	105° 255°	120° 240°	135° 225°	150° 210°	165° 195°	180°
γ		Leuchtdichte in cd/m ²												
45°		27562.9	28428.1	30184.7	30263.3	25666.6	18797.7	13852.3	9489.8	5799.2	2204.0	1276.8	969.2	887.9
50°		21668.8	22034.2	24331.8	25043.2	20871.0	13979.9	9555.8	6242.1	3377.2	1298.8	921.0	647.9	548.0
55°		17000.6	17614.7	19791.0	20642.1	17474.7	10488.0	6337.0	4073.4	1945.7	894.2	625.9	371.6	316.8
60°		13100.4	13932.1	16460.8	17732.5	14462.4	7018.7	3324.5	1989.8	1061.7	617.9	418.9	315.1	267.0
65°		10972.2	11595.1	13794.3	15339.8	11352.4	3997.6	1276.4	758.8	589.3	437.2	343.6	252.9	172.5
70°		9442.1	10551.3	12528.0	12744.8	7864.7	2441.0	596.3	348.7	337.8	298.1	236.7	168.1	101.2
75°		6479.9	7957.8	11329.0	8595.1	5684.8	1807.3	269.8	169.6	200.6	190.9	169.6	141.0	109.7
80°		1765.2	2519.4	5028.4	5576.4	3743.7	1121.1	167.2	149.5	167.2	174.4	167.2	142.3	128.2
85°		709.3	871.9	1595.5	1509.9	510.7	226.6	205.7	241.0	262.5	269.7	255.4	220.1	198.5

Lichttechnischer Prüfbefund

Familie Silica® 21	Bestell-Nr.: 51MX24TAT4S EAN: 4058352687376	LP-Nummer 59276_121
-------------------------------------	--	--------------------------------------

Leuchtdichten in cd/m²

γ 65°
γ 70°
γ 75°
γ 80°
γ 85°

siteco

