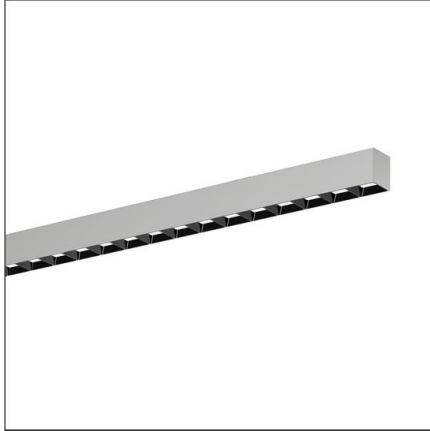


## Lichttechnischer Prüfbefund

Familie  
Silica® 21

Bestell-Nr.: 51MX22DB45SB  
EAN: 4058352898826

LP-Nummer  
59266\_162



**Ausführung** Anbauleuchte, Reflektor, schwarz, direkt strahlend, breit strahlend, UGR≤19 (L65≤1000cd/m<sup>2</sup>)

**Bestückung** LED 4000 K | CRI ≥ 80

**Betriebsgerät** EVG-DALI

**Bemessungswerte**  
Nettolichtstrom = 5400 lm  
Systemleistung = 32.0 W  
Lichtausbeute = 168.7 lm/W

Seriendokumentation  
02.08.2023

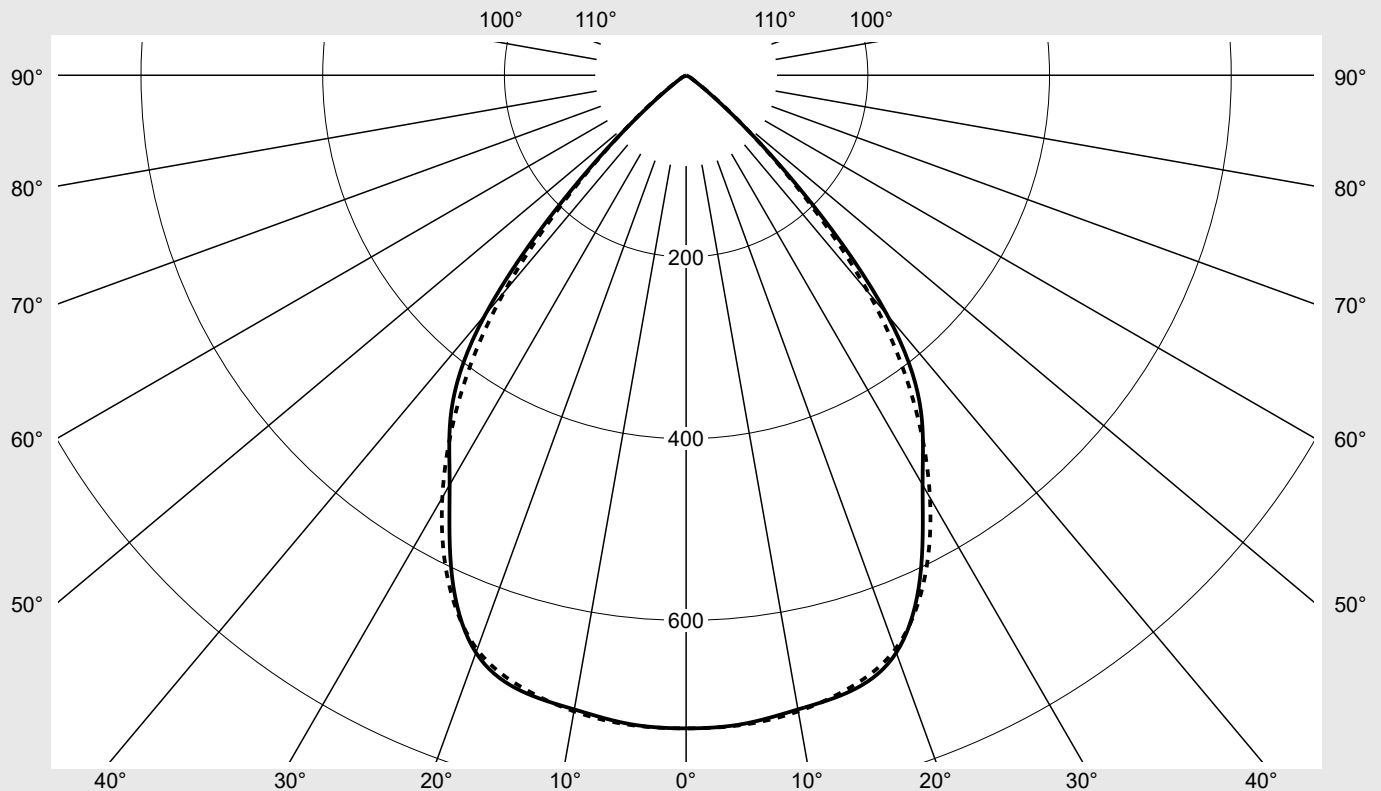
siteco

Lichtstärke in cd/klm

C180-0

C270-90

Imax: 719 cd/klm



#### Klassifizierungen

DIN 5040 A 6 0  
CIE N1=86 N2=100 N3=100  
N4=100 N5=100

#### Leuchtenbetriebswirkungsgrade

$\eta_{LB}$  100,0%  
 $\phi_u$  100,0%  
 $\phi_o$  0,0%

#### Messbedingungen

DIN EN 13032 und DIN 5032

## Lichttechnischer Prüfbefund

<b>Familie</b> <b>Silica® 21</b>	<b>Bestell-Nr.: 51MX22DB45SB</b> <b>EAN: 4058352898826</b>	<b>LP-Nummer</b> <b>59266_162</b>
<b>Wertetabelle Lichtstärkemessung</b>		<b>Maximale Lichtstärke</b>
		<b>sITeco</b>

C- Ebenen	0° 180°	15°	30°	45°	60°	75°	90° 270°	Phi-Zone	Summe Phi-Zone
		165° 195° 345°	150° 210° 330°	135° 225° 315°	120° 240° 300°	105° 255° 285°			
γ									
Lichtstärke in cd/klm									
Lichtstrom in lm/klm									
0°	718.8	718.8	718.8	718.8	718.8	718.8	718.8	4.3	4.3
5°	716.8	715.7	712.2	716.2	717.8	715.2	717.7	34.2	38.5
10°	708.8	709.0	703.3	708.6	709.9	707.6	710.9	67.4	105.9
15°	701.5	704.3	697.3	698.3	698.8	696.7	697.6	99.2	205.1
20°	676.3	682.5	681.1	681.0	677.6	673.2	672.5	127.2	332.2
25°	609.5	618.9	627.5	636.4	634.5	625.9	617.8	145.0	477.3
30°	520.6	528.9	533.1	542.9	550.7	541.7	536.8	147.4	624.6
35°	450.5	455.7	444.2	436.3	445.0	443.0	435.2	139.8	764.4
40°	343.9	350.9	343.2	332.9	329.4	321.5	312.0	117.8	882.2
45°	178.2	185.2	190.8	192.2	186.9	176.3	167.1	71.3	953.5
50°	59.7	64.4	73.8	78.7	75.2	68.1	63.7	29.5	983.0
55°	15.6	18.5	24.7	31.2	26.2	20.2	17.4	10.3	993.3
60°	6.1	6.8	9.1	12.2	9.8	7.7	7.0	4.1	997.4
65°	2.1	2.4	3.4	4.3	3.8	3.0	2.8	1.6	999.0
70°	1.4	1.4	1.0	1.0	1.2	1.5	1.5	0.7	999.7
75°	0.3	0.4	0.3	0.4	0.4	0.5	0.4	0.2	999.9
80°	0.0	0.0	0.1	0.1	0.1	0.2	0.2	0.1	999.9
85°	0.0	0.0	0.1	0.1	0.1	0.2	0.2	0.1	1000.0
90°	0.0	0.0	0.0	0.0	0.0	0.0	0.0	0.0	1000.0
95°	0.0	0.0	0.0	0.0	0.0	0.0	0.0	0.0	1000.0
100°	0.0	0.0	0.0	0.0	0.0	0.0	0.0	0.0	1000.0
105°	0.0	0.0	0.0	0.0	0.0	0.0	0.0	0.0	1000.0
110°	0.0	0.0	0.0	0.0	0.0	0.0	0.0	0.0	1000.0
115°	0.0	0.0	0.0	0.0	0.0	0.0	0.0	0.0	1000.0
120°	0.0	0.0	0.0	0.0	0.0	0.0	0.0	0.0	1000.0
125°	0.0	0.0	0.0	0.0	0.0	0.0	0.0	0.0	1000.0
130°	0.0	0.0	0.0	0.0	0.0	0.0	0.0	0.0	1000.0
135°	0.0	0.0	0.0	0.0	0.0	0.0	0.0	0.0	1000.0
140°	0.0	0.0	0.0	0.0	0.0	0.0	0.0	0.0	1000.0
145°	0.0	0.0	0.0	0.0	0.0	0.0	0.0	0.0	1000.0
150°	0.0	0.0	0.0	0.0	0.0	0.0	0.0	0.0	1000.0
155°	0.0	0.0	0.0	0.0	0.0	0.0	0.0	0.0	1000.0
160°	0.0	0.0	0.0	0.0	0.0	0.0	0.0	0.0	1000.0
165°	0.0	0.0	0.0	0.0	0.0	0.0	0.0	0.0	1000.0
170°	0.0	0.0	0.0	0.0	0.0	0.0	0.0	0.0	1000.0
175°	0.0	0.0	0.0	0.0	0.0	0.0	0.0	0.0	1000.0
180°	0.0	0.0	0.0	0.0	0.0	0.0	0.0	0.0	1000.0

## Lichttechnischer Prüfbefund

<b>Familie</b> Silica® 21	<b>Bestell-Nr.: 51MX22DB45SB</b> <b>EAN: 4058352898826</b>	<b>LP-Nummer</b> 59266_162
------------------------------	---	-------------------------------

UGR-Tabelle		Standardraum									
		Blickrichtung quer zur Leuchte (C0)					Blickrichtung längs zur Leuchte (C90)				
Raumabmessungen											
x	y										
2H	2H	19,0	20,3	19,4	20,6	21,0	18,9	20,2	19,2	20,5	20,8
	3H	18,9	20,0	19,3	20,4	20,7	18,7	19,9	19,1	20,2	20,6
	4H	18,8	19,9	19,2	20,2	20,6	18,7	19,7	19,1	20,1	20,4
	6H	18,8	19,7	19,2	20,1	20,5	18,6	19,5	19,0	19,9	20,3
	8H	18,8	19,6	19,2	20,0	20,4	18,6	19,4	19,1	19,8	20,2
	12H	18,8	19,5	19,2	19,9	20,3	18,6	19,4	19,0	19,7	20,2
4H	2H	18,9	19,9	19,3	20,2	20,6	18,7	19,7	19,1	20,1	20,4
	3H	18,7	19,5	19,1	19,9	20,4	18,5	19,4	19,0	19,8	20,2
	4H	18,6	19,4	19,1	19,8	20,2	18,4	19,2	18,9	19,6	20,0
	6H	18,5	19,2	19,0	19,6	20,1	18,4	19,0	18,8	19,4	19,9
	8H	18,5	19,1	19,0	19,5	20,0	18,3	18,9	18,8	19,3	19,8
	12H	18,5	19,0	19,0	19,4	19,9	18,3	18,8	18,8	19,2	19,7
8H	4H	18,5	19,1	19,0	19,5	20,0	18,3	18,9	18,8	19,3	19,8
	6H	18,4	18,8	18,9	19,3	19,8	18,2	18,7	18,7	19,2	19,7
	8H	18,3	18,7	18,8	19,2	19,8	18,2	18,6	18,7	19,1	19,6
	12H	18,3	18,6	18,8	19,1	19,7	18,1	18,5	18,7	19,0	19,5
12H	4H	18,5	19,0	19,0	19,4	19,9	18,3	18,8	18,8	19,2	19,7
	6H	18,4	18,7	18,9	19,2	19,8	18,2	18,6	18,7	19,1	19,6
	8H	18,3	18,6	18,8	19,1	19,7	18,1	18,5	18,7	19,0	19,5

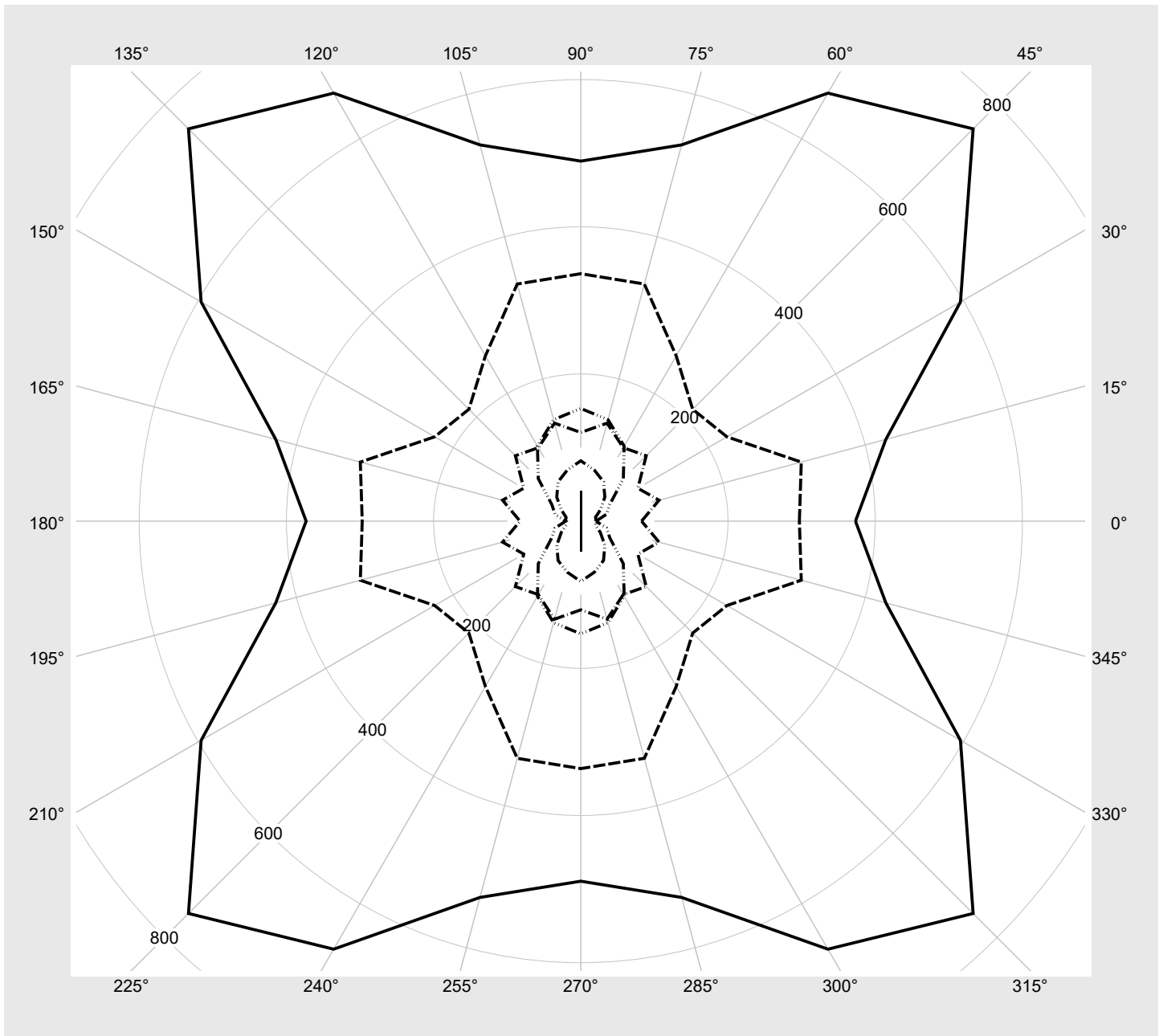
<b>Leuchtdichten-Tabelle</b>	Max. für $\gamma \geq 65^\circ$	Lichttechnische Abmessungen in mm:	L = 1470 B = 49
------------------------------	---------------------------------	------------------------------------	--------------------

C-Ebenen	$\gamma$	Leuchtdichte in cd/m <sup>2</sup>							
		0° 180°	15° 165° 195° 345°	30° 150° 210° 330°	45° 135° 225° 315°	60° 120° 240° 300°	75° 105° 255° 285°	90° 270°	
45°		18893.8	19639.4	20224.8	20378.7	19816.4	18686.5	17719.1	
50°		6967.4	7515.8	8602.9	9174.9	8765.7	7944.9	7434.7	
55°		2040.2	2416.2	3223.4	4082.0	3422.4	2643.9	2274.9	
60°		914.5	1022.3	1370.7	1828.8	1475.1	1154.2	1044.6	
65°		373.2	429.1	595.7	753.9	671.6	529.3	489.2	
70°		297.0	310.2	229.3	215.0	259.3	333.6	336.2	
75°		82.6	110.1	89.5	125.7	115.3	137.9	120.5	
80°		20.7	20.7	30.7	46.2	61.7	71.7	82.0	
85°		20.6	36.1	45.6	81.7	117.8	142.8	153.1	

**Lichttechnischer Prüfbefund**

<b>Familie</b> <b>Silica® 21</b>	<b>Bestell-Nr.: 51MX22DB45SB</b> <b>EAN: 4058352898826</b>	<b>LP-Nummer</b> <b>59266_162</b>
-------------------------------------	---	--------------------------------------

**Leuchtdichten in cd/m²**      γ 65°    γ 70°    γ 75°    γ 80°    γ 85°      **siteco**



## Lichttechnischer Prüfbefund

<b>Familie</b> <b>Silica® 21</b>	<b>Bestell-Nr.: 51MX22DB45SB</b> <b>EAN: 4058352898826</b>	<b>LP-Nummer</b> <b>59266_162</b>
<b>Dimmstufen-Tabelle</b>		<b>sITeco</b>
Umgebungstemperatur: 25°C		

Lichtstrom [%]	Dimmstufe linear	Dimmstufe logarithmisch	Lichtstrom [lm]	Systemleistung [W]
100	254	254	5400	32.0
95	241	252	5139	30.2
90	227	250	4853	28.4
85	214	248	4589	26.8
80	201	245	4323	25.2
75	188	243	4055	23.5
70	175	240	3785	21.9
65	162	238	3513	20.3
60	149	234	3239	18.7
55	136	231	2962	17.1
50	124	228	2707	15.6
45	111	224	2429	14.0
40	99	219	2170	12.5
35	86	214	1888	11.0
30	74	209	1628	9.6
25	61	202	1343	8.2
20	49	194	1079	6.8
15	37	183	812	5.4
10	25	169	546	4.0
5	13	145	279	2.5
3	8	127	167	1.5