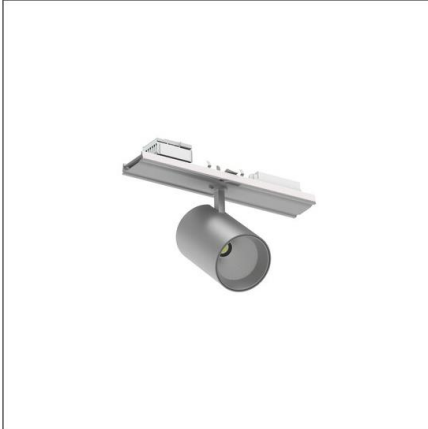


Lichttechnischer Prüfbefund

Familie
Spot 21 Licross®

Bestell-Nr.: 51SL64MB11A2C
EAN: 4069025502735

LP-Nummer
59937_33



Ausführung Gehäuse, weißaluminium, Reflektor, Abdeckglas, klar, breit strahlend

Bestückung LED 2700 K | CRI ≥ 90

Betriebsgerät EVG-Multilumen

Einstellung Werkseinstellung: DIP-Stufe=4

Bemessungswerte Nettolichtstrom = 2600 lm
Systemleistung = 18.5 W
Lichtausbeute = 140.5 lm/W

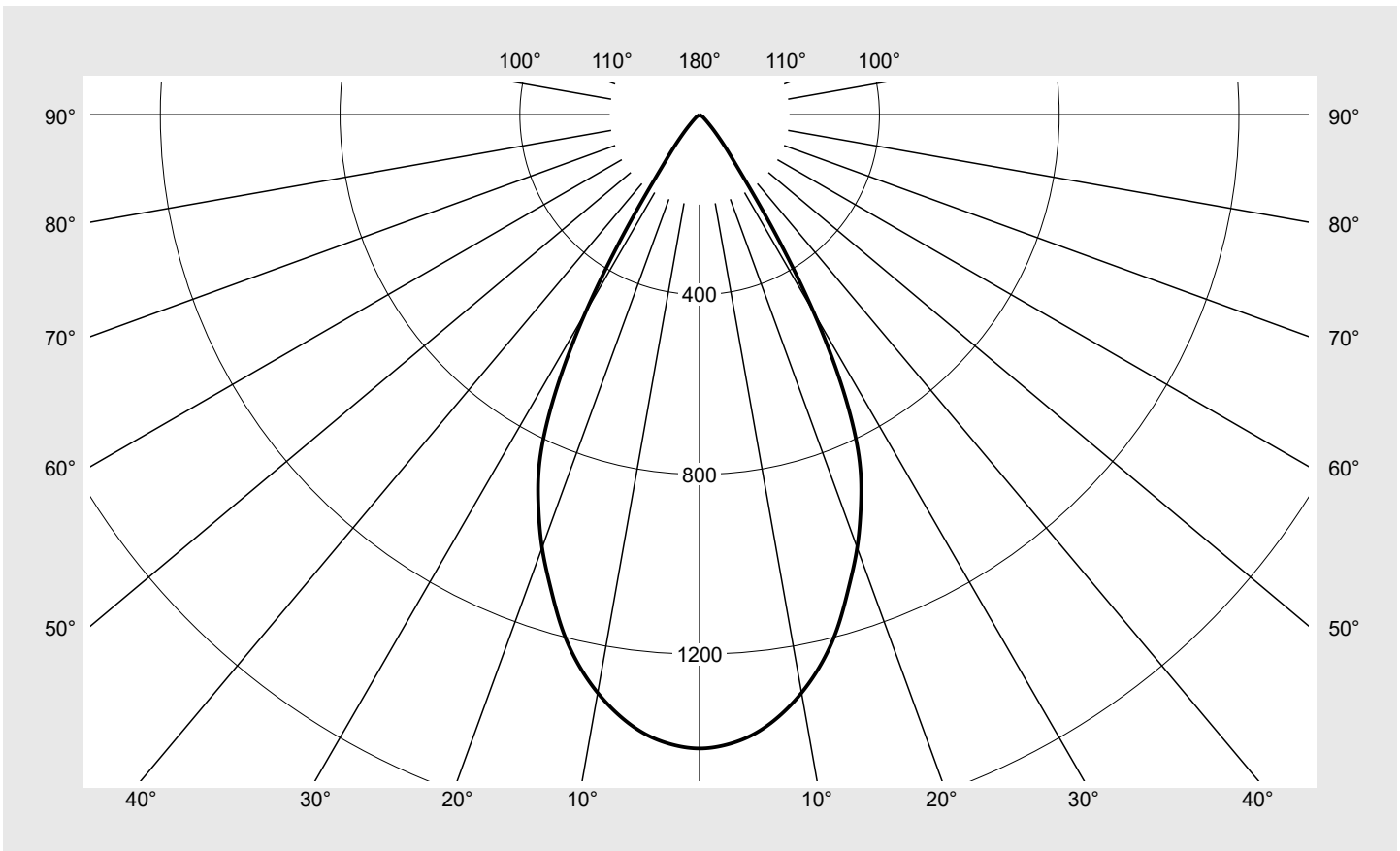
Seriendokumentation
21.05.2026

sitEco

Lichtstärke in cd/klm

C180-0

Imax: 1410 cd/klm



Klassifizierungen

DIN 5040 A 7 0
CIE N1=96 N2=99 N3=100
N4=100 N5=100

Leuchtenbetriebswirkungsgrade

η_{LB} 100,0%
 ϕ_u 100,0%
 ϕ_o 0,0%

Messbedingungen

DIN EN 13032 und DIN 5032

Lichttechnischer Prüfbefund

| | | |
|------------------------------------|--|------------------------------|
| Familie Spot 21 Licross® | Bestell-Nr.: 51SL64MB11A2C EAN: 4069025502735 | LP-Nummer 59937_33 |
|------------------------------------|--|------------------------------|

| | | |
|--|-----------------------------|---------------|
| Wertetabelle Lichtstärkemessung | Maximale Lichtstärke | sITeco |
|--|-----------------------------|---------------|

| C- Ebenen | 0° | Phi-Zone | Summe Phi-Zone |
|--------------|-----------------------|----------------------|-------------------|
| γ | Lichtstärke in cd/klm | Lichtstrom in lm/klm | |
| 0,0° | 1409.8 | 2.1 | 2.1 |
| 2,5° | 1402.5 | 16.8 | 18.9 |
| 5,0° | 1383.3 | 33.0 | 51.9 |
| 7,5° | 1350.1 | 48.3 | 100.2 |
| 10,0° | 1305.8 | 62.2 | 162.4 |
| 12,5° | 1250.9 | 74.2 | 236.6 |
| 15,0° | 1183.2 | 84.0 | 320.6 |
| 17,5° | 1103.1 | 90.9 | 411.5 |
| 20,0° | 1024.9 | 96.1 | 507.6 |
| 22,5° | 937.8 | 98.4 | 606.0 |
| 25,0° | 838.9 | 97.2 | 703.2 |
| 27,5° | 692.9 | 87.7 | 790.9 |
| 30,0° | 508.4 | 69.7 | 860.5 |
| 32,5° | 313.6 | 46.2 | 906.7 |
| 35,0° | 170.0 | 26.7 | 933.5 |
| 37,5° | 107.2 | 17.9 | 951.4 |
| 40,0° | 69.8 | 12.3 | 963.7 |
| 42,5° | 45.7 | 8.5 | 972.1 |
| 45,0° | 29.8 | 5.8 | 977.9 |
| 47,5° | 20.8 | 4.2 | 982.1 |
| 50,0° | 15.0 | 3.2 | 985.3 |
| 52,5° | 11.4 | 2.5 | 987.7 |
| 55,0° | 9.1 | 2.0 | 989.8 |
| 57,5° | 7.4 | 1.7 | 991.5 |
| 60,0° | 6.2 | 1.5 | 993.0 |
| 62,5° | 5.4 | 1.3 | 994.3 |
| 65,0° | 4.6 | 1.1 | 995.4 |
| 67,5° | 4.0 | 1.0 | 996.5 |
| 70,0° | 3.5 | 0.9 | 997.4 |
| 72,5° | 2.9 | 0.8 | 998.1 |
| 75,0° | 2.3 | 0.6 | 998.7 |
| 77,5° | 1.7 | 0.5 | 999.2 |
| 80,0° | 1.3 | 0.4 | 999.5 |
| 82,5° | 0.9 | 0.2 | 999.8 |
| 85,0° | 0.6 | 0.2 | 999.9 |
| 87,5° | 0.2 | 0.1 | 1000.0 |
| 90,0° | 0.0 | 0.0 | 1000.0 |

Lichttechnischer Prüfbefund

| | | |
|------------------------------------|--|------------------------------|
| Familie Spot 21 Licross® | Bestell-Nr.: 51SL64MB11A2C EAN: 4069025502735 | LP-Nummer 59937_33 |
|------------------------------------|--|------------------------------|

| UGR-Tabelle | | Standardraum | | | | | | | | | |
|-----------------|-----|-------------------------------------|------|------|------|------|---------------------------------------|------|------|------|------|
| Raumabmessungen | | Blickrichtung quer zur Leuchte (C0) | | | | | Blickrichtung längs zur Leuchte (C90) | | | | |
| x | y | | | | | | | | | | |
| 2H | 2H | 18,8 | 19,9 | 19,1 | 20,2 | 20,5 | 18,8 | 19,9 | 19,1 | 20,2 | 20,5 |
| | 3H | 18,7 | 19,7 | 19,1 | 20,0 | 20,4 | 18,7 | 19,7 | 19,1 | 20,0 | 20,4 |
| | 4H | 18,7 | 19,5 | 19,1 | 19,9 | 20,3 | 18,7 | 19,5 | 19,1 | 19,9 | 20,3 |
| | 6H | 18,6 | 19,4 | 19,0 | 19,8 | 20,2 | 18,6 | 19,4 | 19,0 | 19,8 | 20,2 |
| | 8H | 18,8 | 19,3 | 19,2 | 19,7 | 20,1 | 18,8 | 19,3 | 19,2 | 19,7 | 20,1 |
| | 12H | 18,7 | 19,3 | 19,2 | 19,7 | 20,1 | 18,7 | 19,3 | 19,2 | 19,7 | 20,1 |
| 4H | 2H | 18,6 | 19,5 | 19,0 | 19,8 | 20,2 | 18,6 | 19,5 | 19,0 | 19,8 | 20,2 |
| | 3H | 18,5 | 19,2 | 18,9 | 19,6 | 20,1 | 18,5 | 19,2 | 18,9 | 19,6 | 20,1 |
| | 4H | 18,5 | 19,1 | 18,9 | 19,5 | 20,0 | 18,5 | 19,1 | 18,9 | 19,5 | 20,0 |
| | 6H | 18,4 | 19,0 | 18,9 | 19,4 | 19,9 | 18,4 | 19,0 | 18,9 | 19,4 | 19,9 |
| | 8H | 18,4 | 18,9 | 18,9 | 19,4 | 19,8 | 18,4 | 18,9 | 18,9 | 19,4 | 19,8 |
| | 12H | 18,5 | 18,8 | 19,0 | 19,3 | 19,8 | 18,5 | 18,8 | 19,0 | 19,3 | 19,8 |
| 8H | 4H | 18,4 | 18,9 | 18,9 | 19,3 | 19,8 | 18,4 | 18,9 | 18,9 | 19,3 | 19,8 |
| | 6H | 18,4 | 18,7 | 18,9 | 19,2 | 19,7 | 18,4 | 18,7 | 18,9 | 19,2 | 19,7 |
| | 8H | 18,3 | 18,7 | 18,8 | 19,1 | 19,7 | 18,3 | 18,7 | 18,8 | 19,1 | 19,7 |
| | 12H | 18,3 | 18,6 | 18,8 | 19,1 | 19,6 | 18,3 | 18,6 | 18,8 | 19,1 | 19,6 |
| 12H | 4H | 18,4 | 18,8 | 18,9 | 19,2 | 19,7 | 18,4 | 18,8 | 18,9 | 19,2 | 19,7 |
| | 6H | 18,3 | 18,6 | 18,9 | 19,1 | 19,7 | 18,3 | 18,6 | 18,9 | 19,1 | 19,7 |
| | 8H | 18,3 | 18,6 | 18,8 | 19,1 | 19,6 | 18,3 | 18,6 | 18,8 | 19,1 | 19,6 |

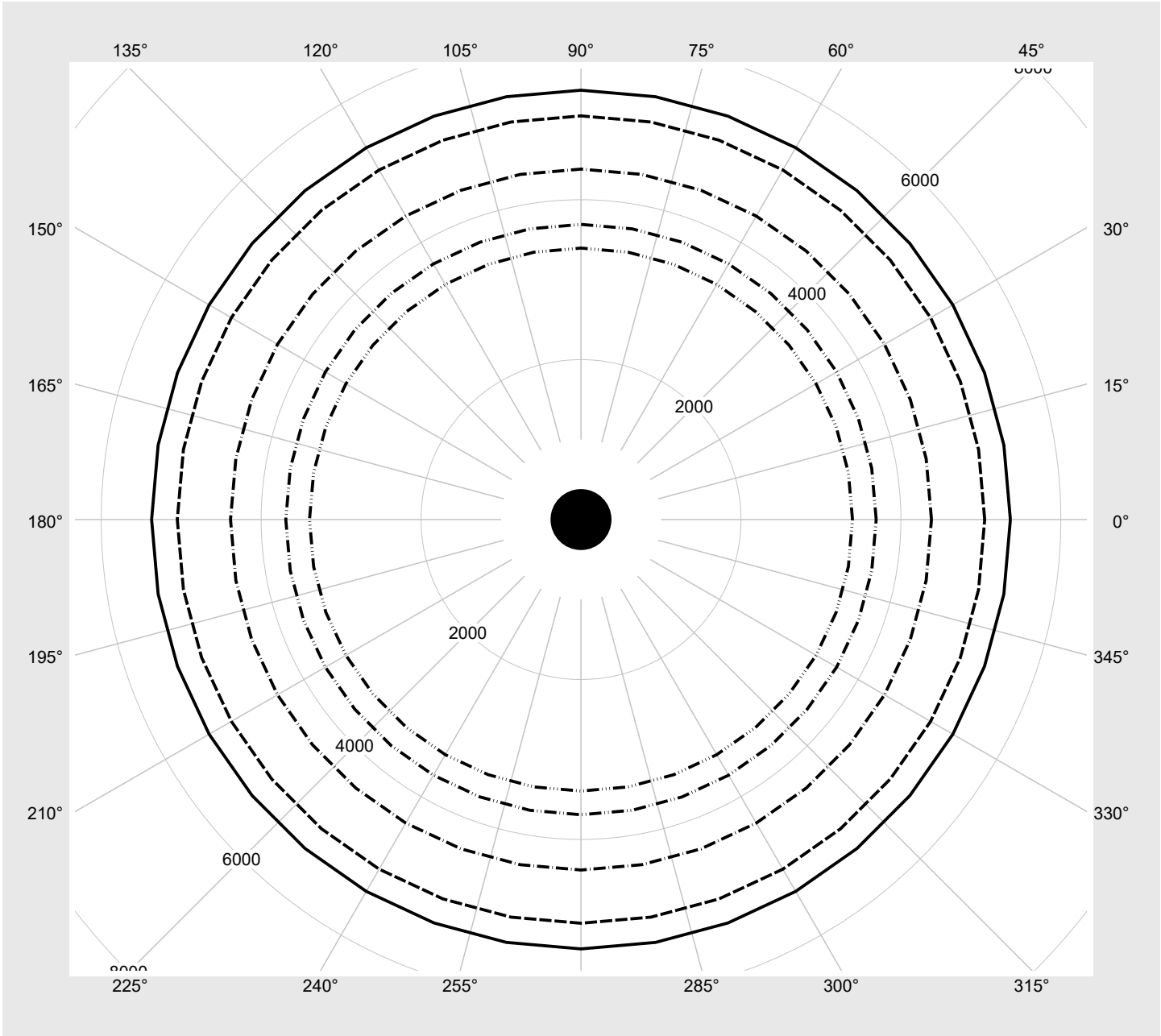
Leuchtdichten-Tabelle Max. für $\gamma \geq 65^\circ$ Lichttechnische Abmessungen in mm: D = 82

| C-Ebenen | 0° |
|----------|-----------------------------------|
| γ | Leuchtdichte in cd/m ² |
| 45,0° | 20717.9 |
| 50,0° | 11510.4 |
| 55,0° | 7825.6 |
| 60,0° | 6116.7 |
| 65,0° | 5369.3 |
| 70,0° | 5048.2 |
| 75,0° | 4382.7 |
| 80,0° | 3691.4 |
| 85,0° | 3395.0 |

Lichttechnischer Prüfbefund

| | | |
|------------------------------------|--|------------------------------|
| Familie Spot 21 Licross® | Bestell-Nr.: 51SL64MB11A2C EAN: 4069025502735 | LP-Nummer 59937_33 |
|------------------------------------|--|------------------------------|

Leuchtdichten in cd/m² γ 65° γ 70° γ 75° γ 80° γ 85° **siteco**



Lichttechnischer Prüfbefund

Familie
Spot 21 Licross®

Bestell-Nr.: 51SL64MB11A2C
EAN: 4069025502735

LP-Nummer
59937_33

Multilumen-Tabelle

Umgebungstemperatur: 25°C

sITeco

| DIP-Stufe | Schalterstellung | | | Lichtstrom [lm] | Systemleistung [W] |
|-----------|------------------|-----|-----|--------------------|--------------------|
| | 1 | 2 | 3 | | |
| 0 | OFF | OFF | OFF | 3500 | 26.5 |
| 1 | ON | OFF | OFF | 3280 | 24.5 |
| 2 | OFF | ON | OFF | 3060 | 22.5 |
| 3 | ON | ON | OFF | 2830 | 20.5 |
| 4 | OFF | OFF | ON | 2600 | 18.5 |
| 5 | ON | OFF | ON | 2360 | 16.6 |
| 6 | OFF | ON | ON | 2120 | 14.8 |
| 7 | ON | ON | ON | 1870 | 12.9 |